



MAPP
APPA Midwest Region



Then...



...and Now

***the history of our association
(so far...)***

Table of Contents

Acknowledgements	2
Preface	3
Our Early Days	4
The Evolution of the Physical Plant Superintendent	9
Early APPA Demographics	9
Incorporation and Tax Exempt Status	10
Annual Meetings	10
Annual Meeting Program	12
MAPPA Officers	13
Business Partners	13
MAPPA Treasury	15
Education/Professional Development	16
Membership	17
MAPPA Mentoring Program	18
Scholarships	18
Awards and Recognition	19
MAPPA Library	20
MAPPA Newsletter	20
Logo	21
MAPPA Web Page	21
Custodial Cost and Staffing Guidelines	21
Big Ten and Friends	22
State Chapters	22
COVID-19 Pandemic	22
APPA Governance Changes 2021	23
Conclusion	23
MAPPA Photo Gallery	24
Exhibit 1 – Original Letters from first Superintendents’ Meeting	37
Exhibit 2 – Fisk’s 1930 History	41
Exhibit 3 – Kinney’s 1955 Midwest Region History	42
Exhibit 4 – James Marks’ Recollections	44
Exhibit 5 – Original Constitution	48
Exhibit 6 –MAPPA IRS Tax Exemption	50
Exhibit 7 – Certificate of Incorporation	68
Exhibit 8 –Certificate of Name Change	77
Exhibit 9- APPA Affiliation Agreement	79
Exhibit 10 – MAPPA and Big Ten and Friends Strategic Partnership Proposal	81
Appendix 1 – MAPPA Conferences	87
Appendix 2 – MAPPA Officers and Committee Chairs	90
Appendix 3 – MAPPA Treasury	110
Appendix 4 – MAPPA Awards and Recognition Recipients	111
Appendix 5 – MAPPA Records Retention Guidelines	114

Acknowledgements

As MAPPA's first Historian, I am pleased to share with you this recorded history of our organization – so far. And while the information is not --and never will be --“complete”, it's a good start. There are many people who have helped this project come together; several are listed below:

- Steve Glazner, APPA, who provided me with a copy of the Facilities Manager article “Celebrating APPA's First 75 Years” from the Summer 1988 issue, and gave me access to his vast files while I was on a brief trip to Washington, DC.
- Sharon Bierman, Ohio State University, who resurrected otherwise inaccessible newsletter archives of MAPPA newsletters from the mid 1990's.
- Ron Flinn - Michigan State University, Tom Smith - retired from Ohio State University, and Jim Stevens - retired from Ohio State, who gave me their personal observations and provided me with MAPPA-related documents from their personal files.
- Bertha Ihnat, Ohio State University Archives, who uncovered and gave me access to APPA Annual Meeting Proceedings (aka “Red Books”) from 1948-66 (and excused my laughter in an otherwise silent room as I perused the old meeting notes).
- Cathy Jacob, University of Wisconsin Archives, who located several old MAPPA/APPA records, worked with me to determine which might be relevant to this project, made copies of those records – and mailed them to me so I didn't have to make a trip to the Madison campus!
- John Ott, Ohio State University/OARDC, Jeri King, University of Iowa, Chuck Scott, Illinois State, and Kris Ackerbauer, University of Wisconsin, who provided me with copies of MAPPA Board Meeting Minutes, MAPPA Treasurer records, and other old APPA and MAPPA records that were helpful in the completion of this project.
- Jim Bogan, University of Wisconsin, who helped me get the final document ready for printing.
- Rocky Mountain Region Historian John Morris for writing “Fifty Years of RMA” that I used as a guide in writing this document.
- And especially to Ruthann Manlet, MAPPA President in 2010-11, and the MAPPA Board of Directors for leading the charge to create the position of MAPPA Historian and having the confidence in me to appoint me to fill that position.

Becky Hines, MAPPA Historian
May, 2013

Preface

This document is the first time the history of MAPPA has been formally recorded since 1956 when E. E. Kinney, the first Secretary of MAPPA in 1955, presented his report at the 1956 annual NAPPA (“National Association of Physical Plant Administrators” as it was known at the time) meeting in Madison, Wisconsin. *[The complete text of this document is included as Exhibit 3.]*

The task has not been an easy one. Mr. Kinney began his report by stating “Compiling the history of an organization many years after its birth is always difficult, and seems doubly so in the case of the Midwest Regional.” I couldn’t agree more!

The information included in this report was taken largely from MAPPA Board Meeting minutes, MAPPA newsletters, and other records I was able to find with the help of our membership past and present. There are still several years of information missing, primarily from 1955-1982. Please continue to look for this missing information in your campus offices, store rooms, and university archives – you never know what’s there until you look!

Interestingly, at the end of his report, Mr. Kinney stated: “May I add as an outgrowth of my search for the above historical data, it becomes more convincing that NAPPA should designate three official libraries as depositories for complete sets of the National Minutes (Red Book) and the Newsletter; one Eastern, one Midwest, and one Western (or more if you please). Before it is too late, let’s get these files complete.”

I am honored to be selected as MAPPA’s first official historian and have enjoyed tremendously taking this trip – with all of its “detours” – down memory lane. As with any history, this is a fluid document that will be updated as time goes on – and as additional information is found. I’m hoping that one of you will stumble upon more missing information while cleaning out the old storage places in the bowels of your campus power plant!

Becky Hines, MAPPA Historian

May, 2013

Updated October, 2015

Updated July, 2017

Updated August, 2019

Updated September, 2023

MAPP A

the history of our association

OUR EARLY DAYS

In 1914, J. M. Fisk, the Superintendent of Buildings and Grounds at the State University of Iowa in Iowa City contacted several of his colleagues in similar positions at surrounding schools in the Midwest seeking their interest in getting together to discuss topics of mutual interest. Below is a copy of his letter from the 1960 APPA Proceedings book...

"We believe many of the members will be interested to know how our organization got started, and of some of the people who were instrumental in getting it underway. The following correspondence has been taken from the files of an earlier day:

The State University of Iowa
Iowa City

February 4, 1914

Dear Sir:

Under the date of January 24th I sent you a letter asking for information regarding the advisability of forming an organization among the superintendents of buildings and grounds; at the same time I sent a similar letter to the following institutions:

University of Chicago
Northwestern of Chicago
University of Ohio
University of Oklahoma
University of Indiana
University of Kentucky
Purdue University
University of Kansas

University of Michigan
University of Missouri
University of Nebraska
University of Wisconsin
Iowa State College
State Teachers at Cedar Falls

Up to date I have received replies from the following, all of whom are in favor of the idea and many very enthusiastic:

University of Chicago
Northwestern of Chicago
University of Ohio
Purdue University
University of Kansas
University of Michigan
University of Missouri
University of Nebraska
University of Wisconsin
Iowa State College, Ames

In my letter I suggested that our first meeting be held in Chicago, which would be quite central, and I quote a letter which I have just received from Mr. Douglas of the University of Chicago:

"I have your communication of Jan. 20th, and beg leave to join the movement which I feel is a very splendid scheme for all of us 'Detail-overburdened' people. There are many situations in our institution which I am sure some of you people have worked out, and I in turn may possibly be able to help some of you. Would be very glad to meet all of the others here in Chicago, or in any other central place and delighted if they care to hold such meeting here at our institution."

I would like very much at this time to hear from you in order that we may arrange to have a meeting in the near future, and have as many present as possible.

Would be very glad to have you write me concerning any views which you may entertain.

Yours truly,

(signed) J. M. Fisk
Supt. Grounds & Bldgs.

Mr. Sloss, Supt.,
Iowa State Teachers College,
Cedar Falls, Iowa

(Note) Thomas:-

I have spoken about this scheme to you before and feel that you are in favor. Mr. Boyd thinks it a good idea. I supposed you could steal away for a few days a little later on.

Best regards to your family.
(Signed) J. M. Fisk"

[Copies of original responses to Mr. Fisk's letter are included as Exhibit 1]

[A copy of Mr. Fisk's May 1930 history is included as Exhibit 2]

And so, a group of fourteen superintendents met at the Sherman Hotel in Chicago in 1914, gradually growing to include superintendents from other universities. In 1928 the location of meetings moved for the first time to institutions in states adjacent to the Big Ten group.



The first known photo from an Association of Superintendents of Buildings and Grounds annual meeting taken in 1926 in Ann Arbor. J. M. Fisk, fifth from the left in the front row, is credited with starting the Association in 1914.

In 1939, 55 members of the Association adopted a constitution at the annual meeting at Michigan State. The “Superintendents of Buildings and Grounds of Universities and Colleges” continued to meet under that name until 1948. To reflect the expansion of responsibility and title changes of the former superintendents, 81 members met at the University of Minnesota in Minneapolis in 1948 and voted to change the name from the Association of Superintendents of Buildings and Grounds to the National Association of Physical Plant Administrators of Universities and Colleges (“NAPPA”). This was the first name change since its inception.

The Association grew during this time from the original 14 superintendents at the 1914 meeting to over 175 institutions in 1953.

Roy Lund, who started at the University of Minnesota in 1922 as a draftsman, attended APPA’s annual meeting in 1927 at the University of Minnesota. “There were about 15 present”, he said, adding that the meeting was mostly bull sessions. Discussions were mainly on custodial problems – painting, classroom, lighting – and watchman services. Lund, who retired in 1970 as assistant vice-president and director of plant services, said “I attended twenty-six national conventions in the United States and Canada. I fondly remember my early contacts with Paul Elleman, Ed Pardon, Henry Pearson, Al Gallistel, and Ed Kinney.”



Group photo from the 1948 Superintendents’ meeting at the University of Minnesota, at which the membership voted to change the Association’s name

During the 1930's, discussions were held about which institutions should be invited to the annual meetings. Some members favored limiting attendance to those within the Midwest, while others suggested it would be better to invite a select few from outside the area. The latter format prevailed and the 1938 meeting was held at Harvard University in Cambridge, Massachusetts.

In the early 1950's, NAPPA Leadership "urged members to organize for regional meetings." The original core of NAPPA - the Midwestern group - "lost its identity in the mushrooming National" according to a 1955 "Report of Midwest States Regional Association of Physical Plant Administrators of Universities and Colleges" written by E. E. Kinney, Consultant for the Department of Buildings and Utilities for Michigan State University [complete text Exhibit 3].

On December 4, 1953, twelve men from the Midwestern group met at the Illini Alumni Center in the LaSalle Hotel, Chicago, to "discuss the procedure and organization for the establishment of a Midwestern regional group of the Association of Physical Plant Administrators." In 1954, NAPPA adopted language in its constitution defining and recognizing regional organizations: the purpose is to "promote the common interests in the maintenance, operation, planning and development of the Physical Plants of Universities and Colleges in the region, and to foster the professional spirit among men engaged in such work and to aid and supplement the work of the Association."

Thomas B. Smith, retired from Ohio State University and APPA President in 1981, said "The regions were not subdivisions of APPA" he explained, "they wanted to maintain their own identities." The regions "were parts from which APPA was made", Smith said. "They felt they were as important a building block as APPA was, but not the other way around."

The Midwest Region Constitution [Exhibit 5], name, officers and boundaries were submitted to the national on March 21, 1955. Paul Elleman, Ohio State, was the first official MAPPED President. The MAPPED By Laws and Administrative Guidelines were written and are continually revised. [These current documents are on the MAPPED web page.]



When boundaries were first established for the regions, borders were "approximate". In some instances several institutions below the 40 degree latitude in Ohio, Indiana and Illinois belonged to the Southeastern region.

Since 1955, MAPPED has met annually, beginning in Chicago and eventually moving to other states within the region: Minnesota, Wisconsin, Michigan, Ohio, Indiana, Illinois, and Iowa.

In summary, a group of superintendents from the Midwest created an association that grew into what now is APPA. They regained their identity in 1955 with the official formation of MAPPED – the Midwest Association of Physical Plant

Administrators. In this historian's opinion, it could be argued quite effectively that MAPPED actually began in 1914!

THE EVOLUTION OF THE PHYSICAL PLANT SUPERINTENDENT (or “Some things change and some things stay the same”)

The job description and responsibilities of a physical plant superintendent have changed dramatically over time. Many grew from being supervisors of buildings and grounds to highly professional administrators with significant jurisdiction and responsibilities. According to an article in the 75th Anniversary edition of Facilities Manager (1988), the profession “has faced enormous upheaval such as growing enrollment and expanding physical plant departments, shrinking enrollments at some institutions, increased federal regulations, automation of mechanical systems, computerized recordkeeping, formation of labor unions, increased paperwork, and a rise in vandalism, all while ...working with fewer funds than needed.”

Walter Wade, Purdue, said when he started at Purdue in 1946 there were four administrators involved in operation of the plant. “When I left Purdue, I must have had 105 administrators...and the staff was...900 altogether. The campus had grown from 7,000 to 32,000 at that time.”

During the 1950’s, one of the biggest problems facing the profession was that “University presidents and boards allowed their schools to over-build with no provisions to maintain them.”

At the 50th anniversary meeting in 1963, Mr. Stanley Patterson, SMU retired, stated “You gentlemen that are running the Physical Plant Department now are doing some things that we did when we were running the Building and Grounds Department. Your love for the faculty and their love for you still holds; however, you don’t have a monopoly on the situation. The day shift blames the night shift for everything; even in the armed services the Second Lieutenant has his opinion of the enlisted men. They, in turn, have some ideas about a Second Lieutenant.”

The 1937 meeting at Ohio State had 48 people in attendance. All of the presentations at this meeting were given by members. Paul Elleman (first MAPPA President) hosted the meeting. He was newly appointed superintendent taking over the hosting duties from W. C. McCracken, one of APPA’s charter members. In 1947, there were about 100 people at the annual meeting at Ohio State. Walter Hartman from Ohio State remembered the year as the one “Paul Elleman was [APPA] President.”

According to Walter Hartman, retired from Ohio State when interviewed in 1988, “the major effort was to get things done. Now, procedures, regulations and paperwork consume much of the administrator’s time.”

EARLY APPA DEMOGRAPHICS

According to an APPA Long-Range Planning Survey in 1983:

- ⅓ of national membership is held at public institutions
- ½ of membership is held by institutions with less than 3000 FTE (fulltime equivalents) student enrollment
- ¾ have less than 3 million gross square feet
- ¾ of representatives are over 41 years old
- ¾ have at least a bachelor’s degree
- 56% of the degrees are in business or social science fields
- ⅓ are responsible for all plant functions

- 95% see plant administration as a career
- Principle reasons for belonging to APPA are to associate with fellow professionals and to have access to specialized information
- Major issues of concern are: budget, utility expenses, productivity and effective communication with top administration

INCORPORATION AND TAX EXEMPT STATUS

According to Kinney's 1956 report, the Midwest Region Constitution, name, officers and boundaries were submitted to the national on March 21, 1955. MAPPa received 501(c) 3 (Income Tax Exemption) determination by the IRS in February, 1983. *[Subsequent letter from IRS included as Exhibit 6].*

The Articles of Incorporation of the Midwest Association of Physical Plant Administrators of Universities and Colleges was filed on June 9, 1982 *[included as Exhibit 7].* The name of the organization was officially changed on December 26, 1995, to the Midwest Association of Higher Education Facilities Officers. A subsequent amendment in the Articles of Incorporation was filed at the same time *[documents included as Exhibit 8].* APPA/Region Affiliation Agreement is included as Exhibit 9.

ANNUAL MEETINGS

Annual Meetings have been held since the original group of Midwesterners first met in Chicago in 1914. 26 of the first 40 meetings were held in the Midwest. Since 1955, when the Midwest Association of Physical Plant Administrators officially emerged, MAPPa has met annually, beginning in Chicago and eventually moving to other states within the region. Meetings have evolved from "roundtable bull sessions" to formal meetings with presentations and educational sessions.

M I D W E S T E R N

R E G I O N A L

M E E T I N G

ILLINI ROOM

La Salle Hotel
Chicago, Illinois

November 10-11, 1958

* * *



MEMBERS and GUESTS snapped
just before lunch on November

11. Read rows left to right. Front Row: Eugene Slack, E. E. Cole, H. E. Pearson, P. H. Beckmann, E. C. Johnson, John H. Sweitzer and Evan Walden.

Second Row: C. S. Havens, Ben W. Schaefer, R. M. Shafer, G. J. Carlsen, P. D. Jackson, A. F. Ahearn, Roy V. Lund, and W. J. Parduhn.

Third Row: R. J. Phillips, John Doak, A. F. Gallistel, John Sanderson, LeRoss Morris, Harry M. Buchholz, Chase A. Stiers and Cyrus A. Bunting.

Fourth Row: M. Arthur Perry, W. T. Olson, Walter Timmis, Paul H. Elleman, N. W. Marble, W. R. Zellner, Fred T. McGinnis, T. B. Simon and Walter M. Roth.

* * *

The first record of fees for an annual meeting was in 1983 when MAPPA met at Bowling Green State University. In general, the fee scale included separate fees for members, non-members, spouses, and emeritus members. Member registration in 1983 was \$75 and spouses \$35; an additional \$10 added to both as the meeting grew closer. Member fees were \$110 (early bird) in 1989, and increased to \$125 in 1992 and \$150 in 1995.

For the 1993 conference, the Board recommended reinstatement of 25 first time scholarships to annual MAPPA meetings, and ten hardship scholarships. For the 1996 meeting, the number of first-timers was limited to 20 for the reduced fees. In 2004 the fee was \$250 and a \$100 gift certificate to the APPA Bookstore was provided with the registration packet. Member registration was raised to \$260 in 2005 and \$275 in 2006. In 2006, for the first time, speakers for one day did not have to pay a registration fee and first-timers were charged half of the attendee rate. In 2007, there was one registration fee for everyone regardless of status. In 2015, members paid \$290 and non-members paid \$340, guests paid \$125 and Business Partners paid \$750 (members) and \$895 (non-members).

In 1991, the first annual meeting rotation schedule was established: Michigan, Indiana, Wisconsin, Illinois, Ohio, Minnesota, and Iowa. This rotation was changed in 1996 to offer better balance between MAPPA "central" and "fringe" states: Indiana, Michigan, Wisconsin, Iowa, Illinois, Ohio and Minnesota. Most recently, the selection of the meeting location was assigned to the Site Selection Committee consisting of the Past President and APPA Representatives. In the early 2000's a set of host guidelines was developed for those hosting annual meetings.

ANNUAL MEETING PROGRAM

The early MAPPAs meetings were very informal with a “program” consisting of discussion topics submitted in advance by attendees.

In 1984, the MAPPAs Vice President (now President-elect) was assigned the responsibility for the program for the upcoming conference. In 1986, the Board established that the annual meeting Program Committee will consist of one member from each state including the host. This committee met only once before the annual meeting; reimbursement of expenses was made by MAPPAs when requested by the committee member.

In the 80’s, the Program Committee met at O’Hare Airport in Chicago in February/March.

The 1990 meeting host, Jack Dudley, a past MAPPAs president, suggested that registrations be sent directly to the Host Committee for better information and cash flow. He also suggested that the Host Committee serve on the Program Committee. It appears the first meeting in conjunction with the MAPPAs December Board meeting was in 1993.

In January, 1999, the “Big Ten and Friends” (see “Big Ten and Friends” on page 21) Trainers group formed a strategic partnership with MAPPAs resulting in the creation of the MAPPAs Education (now Professional Development) Committee, which is now responsible for the annual meeting program guided by the MAPPAs President-elect. [MAPPAs/Big Ten and Friends Proposal included as Exhibit 10]

In the early 2000’s, on-line registration became available for annual meetings.



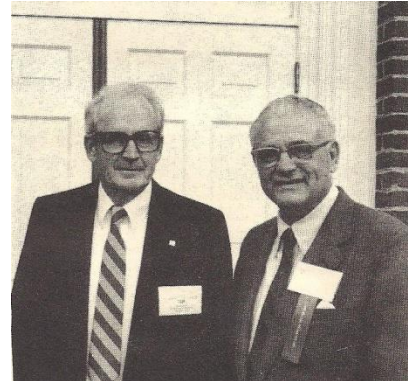
MAPPAs booth at 2011 annual meeting

A MAPPAs booth at the annual meeting was created in 2006 by then Professional Development Chair Ruthann Manlet, to promote the role of the MAPPAs Professional Development Committee, the various benefits MAPPAs membership has to offer our members, and ways to get involved in the MAPPAs organization. The popular booth has games and giveaways for our conference attendees.

Effective with the 2008 conference, the Board approved increasing the maximum fee for keynote speaker from \$2,500 to \$10,000.

For the first time, at the 2010 meeting the decision was made to include the “Big Ten and Friends” Building Services Administrators Conference as an additional program track.

[Annual meeting locations, program and financial data are included as Appendix 1]



Tom Smith, APPA President 1981, and legendary Football Coach Woody Hayes who was the keynote speaker at the 1985 MAPPAs meeting at Miami University

MAPPA OFFICERS

While early MAPPA records are minimal, it appears that for the first several years MAPPA officers included a President and Vice President, and the positions of Secretary and Treasurer which could be one person. In 1984, APPA Representatives were added to the MAPPA Board of Directors. The MAPPA Newsletter Editor (now Communications Chair) was added in 1988. The MAPPA Vice President position was eliminated in 1989 and changed to MAPPA President-elect. In 1990, the Administrative Guidelines were amended to designate the previous two MAPPA Presidents as the Junior and Senior Representatives to APPA. In 2005 a non-voting at-large Board Position was established (that could be filled by a Business Partner). In 2009, the APPA Committee Representatives were also added to the Board. In 2011, the position of Historian was added to the Board. In 2013, the position of Conference Coordinator was also added. The position of Past President was eliminated in 2017.

The current Board of Directors includes:

- President
- Immediate Past President
- President Elect
- Treasurer
- Secretary
- Business Partner
- APPA Regional Director
- Membership and Community Engagement Chair
- Professional Development Chair
- Historian
- Communications Chair
- Awards and Recognition Chair
- Conference Coordinator
- APPA Liaison [*List of MAPPA officers and representatives can be found in Appendix 2*]

BUSINESS PARTNERS/VENDORS

Vendor exhibits first appeared at the annual national conference (NAPPA) in Boston in 1960.

The topic of our Business Partners – formerly known as “vendors”- first appeared in MAPPA Board meeting minutes of September 25, 1985 when the Board decided “at future MAPPA meetings ... booths, or industrial exhibits by vendors would not be approved.” On December 3, 1987, a motion was made and approved to allow vendors to become subscribing members of MAPPA. They have been an integral part of our organization ever since.

In 1987, the Board discussed the desirability of having written guidelines for all vendors to include:

- A) Who is the vendor?
- B) Who is the MAPPA contact? Preferably a single person
- C) Opportunity for vendors to “present” themselves

President Mediate appointed Bill Sharp, Wayne Zdrojkowski and John Houck to give recommendations. Jim Landers, host of the 1988 MAPPAs meeting in Cincinnati, was advised to follow the policy used in Indianapolis (assigning sponsors for breaks, hospitality suites and lunches) for the 1988 meeting. At the 1988 meeting, 12 vendors participated for a total of \$2,982.00 in sponsorships.

On July 26, 1988, the Board agreed to plan, if possible, to have vendors at the 1990 meeting in Wisconsin and supported vendors for the following reasons: To improve the quality of the meeting, to hold the cost of the meeting down, to fund scholarships, and to fund HEFT (APPA's Higher Education Facilities Trust project). At the same time, the newsletter editor, John Houck, was going to explore the interest of vendors to advertise in the MAPPAs newsletter.



2012 exhibit hall

Listed below are the vendors who sponsored the 1988 conference. This is the earliest list of MAPPAs vendors that was found:

1988 Annual Meeting Sponsors – Xavier University, Cincinnati

The Systems Works Marietta, Georgia	Rosemary's Queen Step Carpet Cincinnati, Ohio	Graybar Electric Co. Cincinnati, Ohio
Dover Elevator Company Cincinnati, Ohio	Handy Window Shade Co. Cincinnati, Ohio	Napier Painting and Decorating Cincinnati, Ohio
United Technologies Carrier Cincinnati, Ohio	F. A. Kamp Flooring Co. Cincinnati, Ohio	Superior Janitor Supply Cincinnati, Ohio
Cook-Trane Service Agency Cincinnati, Ohio	Universal Contractors Cincinnati, Ohio	Burns-McDonnell Engineering Kansas City, Missouri

On July 16, 1989, the Board established the following donor categories:

- Major benefactor: Those who sponsor in full, any one of the major events at MAPPAs annual meeting.
- Benefactor: Those who contribute a major (or large) portion of fiscal support for any of the major events or have provided full sponsorship for any minor event.
- Patron: Those who contribute \$1000 or more for any event and/or to the general annual meeting fund to be used at MAPPAs direction.

- Sponsor: Those who contribute \$100 or more, but less than \$1000 for any event or to the general fund.

On December 7, 1989, the Board established that breaks, breakfasts, lunches, cocktail hours and evening meals were available for support in addition to the 20 or so booth spaces for the upcoming 1990 MAPPA Conference in Racine, Wisconsin. The booth fee would include costs for events held in the vendor area. The host committee was to develop two vendor lists: a “preference” list (past participating and local vendors), and a “full” list (from APPA).



MAPPA members visiting a 2012 Business Partner Booth

The cost of MAPPA Vendor booths has increased over the past 25 years:

1990 - \$350

1991 - \$450

1992 - \$500

2002 - \$900

2004 - Board approved business partners pay double cost for registration if they do not have a booth or sponsor something

2005 - \$1000 to include 2 people for opening reception, breakfast and lunch on Monday; vendor presentations not allowed unless the education committee feels they are appropriate and we approach them.

2006 - \$1400 (includes 2 registrations)

2008 - \$1500 (includes 2 registrations)

2010 - Business Partners will be allowed to present in the hall if they are MAPPA members

2011 - Business Partners may join MAPPA only for \$275; 10% goes to APPA

2013 – Fee schedule changed to include sponsorship levels: Diamond, Platinum, Gold, Silver and Bronze, ranging from \$7,000/\$8,000 (member/non-member), to \$1000/\$1200, including varying levels of benefits.

MAPPA Business Partners have become an essential part of the MAPPA membership and culture, providing far more than financial support. As a result, in 2005, an amendment to the MAPPA By Laws was adopted to allow up to two at-large non-voting members (which could be Business Partners) to become members of the MAPPA Board of Directors. John Coggins, Spirotherm, was the first Business Partner appointed to this position in 2011. Since that time, Business Partners have also been encouraged to present in conjunction with members of MAPPA schools to increase the value of our educational offerings. Costs have changed since that time, but we continue to greatly appreciate the many contributions of our Business Partners - they make our organization stronger!

MAPPA TREASURY

The first reference to MAPPA dues to APPA was in 1985: “new dues arrangements were concluded with APPA: APPA would assess all Midwest members an additional 10% to cover regional membership – APPA will retain 10% of the additional amount which they collect as a service charge.”

The earliest record of the MAPPAs Treasury is December, 1982, and there was a cash balance of \$9,950.75. The Treasury has grown over the years to its current balance in excess of \$320,000. As the MAPPAs Treasury has grown, the Board has taken several steps to invest the surplus. In the early 1990's, a budget reserve of \$50,000 was first established. More recently, the reserve requirement was adjusted to 1.5 times projected expenses.

In 2015, the Board reviewed the MAPPAs fiscal plan to develop a fiscal goal that best benefits the MAPPAs membership. As a result, the reserve was established at \$120,000 plus \$75,000 in investments. A process was created for the Board to review this plan annually and make appropriate adjustments and recommendations for using the surplus.

[Treasury records are included as Appendix 3]

EDUCATION/PROFESSIONAL DEVELOPMENT/FACILITIES TRAINERS NETWORK

On October 15, 1981, Facilities Trainers from several of the Big Ten Schools first met at O'Hare Airport. This group, patterned after the "Big Ten and Friends" groups for Maintenance, Grounds, etc., grew over the next several years meeting annually on different campuses to exchange ideas and offer training opportunities to schools in our region. Topics covered included custodial, safety, benchmarking, and other relevant facilities issues. Emerging from this group were the MAPPAs Trainers Library, consisting of video tapes and DVDs made available to our membership, and a Trainers Listserv which created a quick link for Trainers to talk to each other.

In January 1999, this Big Ten group formed a strategic partnership with MAPPAs resulting in the creation of the MAPPAs Education (now Professional Development) Committee, a benchmark within APPA. The Education Committee, which included representatives from both organizations, was formed to develop and administer an ongoing program to make identified training and education offerings accessible and available to all institutions, large or small, including the MAPPAs annual meeting program.

As time went on, more and more training information was accessible electronically. The Library and listserv were dissolved, and it was becoming increasingly difficult to find hosts for annual Big Ten meetings. In 2013, the group co-located with the annual MAPPAs conference for the first time.

With the continued evolution of the MAPPAs Professional Development Committee, there was no longer a need to have two separate training groups. As a result, in 2020, the MAPPAs Board decided to dissolve the Trainers Network.



Big 10 + Friends Trainers Conference
May 21-23, 1997

(Left to Right)
 First Row: Bob Beck, Robin Billington, Linda Foster, Patricia Turner, Lisa Bittles, Nancy Hartman, Rosamaria Ostberg, Jim Irwin, Jeff Buenting
 Second Row: Paul Schmeller, Cheryl Hoch, Roger Homan, Bob Propst, Wendy Ramney, Karen McGuire, Cindy Stone
 Third Row: Larry Sackett, Darless Harmon, Jed Dertinger, Pete Beaulieu, Phil Brown, Suzanne Ahlersmeyer, Karen Luedke
 Fourth Row: Alicia Wainright, Rick Stewart, Craig Aldrich, Phillip Warren, Becky Hamilton
 Fifth Row: Thom Mileu, Nate Taylor, Larry Stokes, Howard Byers, Steve Baker

In August, 2005, MAPPA paid for Ruthann Manlet, Education Program Chair, to become a qualified Toolkit trainer. As a result, since 2007, the APPA Supervisor Toolkit program is now offered to our membership at every MAPPA Annual Meeting and additional trainers in the region have become qualified trainers. Beginning in 2008, the Educational Facilities Professional (EFP) and Certification for Educational Facilities Professionals (CEFP) programs have also been offered at the annual meeting. Both programs have been well-attended and successful.

[MAPPA/Big Ten and Friends Proposal included as Exhibit 10]

MEMBERSHIP

Early membership numbers for MAPPA are unavailable. Membership categories now include: Affiliate, Associate, Business Partner, Emeritus, Honorary, Institutional, International, Retiree, and Student. The most recent (December, 2022) numbers show a total of 149 institutions and 34 Business Partners.



2012 Supervisors Toolkit Class

MAPPA MENTORING PROGRAM

The MAPPA Mentorship program was started in 2010 by MAPPA President Ruthann Manlet because she felt strongly about giving back to our organization and building our future leaders.

The current program has stalled since COVID.

SCHOLARSHIPS

In 1986, APPA established that it would award one scholarship per region beginning with the January 1987 Institute in Denver, the recipient to be determined by the Region. In 1989, the MAPPA Board established two MAPPA scholarships for the APPA Institute, and the possibility of more scholarships due to substantial treasury balance. In 1990, MAPPA established a \$500 MAPPA scholarship to the APPA Executive Institute. In 1992, MAPPA approved a total of five scholarships in addition to the two from APPA; preferably these seven scholarships be distributed among all seven states in MAPPA.

In 1993, MAPPA increased the annual APPA Institute scholarships to include a travel stipend of \$400, if needed, and to fund the balance of the tuition to the Executive Development Institute. On November 15, 1993, the MAPPA Board decided that APPA membership was a requirement to receive an APPA or MAPPA scholarship. This requirement has since been removed.

For the 1993 meeting, the Board recommended reinstatement of 25 first time scholarships to annual MAPPA meetings, and ten hardship scholarships. For the 1994 meeting, it was approved to continue funding 35 first-timer scholarships to the MAPPA annual meetings, which was subsequently clarified to limit scholarships to institutional members only. That requirement has since been removed.

On December 6, 1994, a motion was approved to redistribute any unspent funds from the Scholarship travel funds to State APPA organizations, up to \$300 per state, for state meetings and/or programs.

In 1995, Larry Quick, a former MAPPA president, established criteria for awarding scholarships based upon:

- 1) How active in MAPPA
- 2) Only one from each school
- 3) How recently the school received the last scholarship
- 4) Ensuring that smaller schools get their fair share
- 5) Recommendation of Physical Plant Director of the school
- 6) Reason for wanting to attend

In 1995, the Board agreed to fund scholarships to four Facilities Institutes and one Executive Institute per year, and to retract the \$300 allowance to State APPA organizations from unspent scholarship travel funds. First-timers were limited to 20 for the reduced fees for the 1996 annual meeting, and the Board approved including a listing of MAPPA scholarship recipients with the By Laws (which never happened but are now included on the MAPPA web site).

As the MAPPA Treasury surplus has grown, scholarships are actively promoted to encourage members to utilize MAPPA and APPA programs.

AWARDS AND RECOGNITION

Over the years, APPA created several awards and recognition programs for its members. Several MAPPAs members have received APPA Awards over the years. Following is a list of Awards; MAPPAs recipients are listed in Appendix 4:

APPA Award for Excellence in Facilities Management:

Established in 1988, APPA's highest institutional honor recognizes and advances excellence in the field of educational facilities.

Effective and Innovative Practices Award: Established in 2004, this Institutional Award recognizes programs and processes that enhance service delivery, lower costs, increase productivity, customer service, etc.

APPA Fellow: Established in 2004, recognizes an individual's specific accomplishments and expectations for continuing involvement in APPA's leadership program through research and mentoring.

Meritorious Service Award: Established in 1958 as APPA's highest individual award recognizing the member's outstanding contribution to their institution, profession and the association.

Pacesetter Award: Established in 1999, this individual award is designed to encourage further participation in APPA among those who have already made significant contributions to their regions or chapter.

Rex Dillow Award: Established in 1987 and presented to the author of the best article published in Facilities Manager during the previous year.

President's Award: Established in 1986 and awarded to individual APPA members at the discretion of the current APPA President.

Sustainability Award: This award was introduced for the first time in the 2012 annual award cycle and recognizes the facilities management department that has integrated sustainable policies and "green" practices throughout all facets of the organization and embedded them within the educational institution.

Unsung Hero: Introduced in 2009, regional presidents are asked to suggest a worthy individual(s) who work tirelessly for their region, chapter, and/or the profession, but whom have gone unnoticed to date and are worthy of receiving an award from the president of International APPA.

MAPPAs President's Award: This award is given at the discretion of the MAPPAs President, with the approval of the Board, to recognize an individual who has provided service to MAPPAs that is above and beyond the normal expected participation.

"My most special memory of APPA", says Dick Neidhard, 1983 MAPPAs President, "was the banquet at the 1984 meeting in Columbus when I was presented with the Meritorious Service Award. That kind of an honor is seldom enjoyed by many people."

MAPPA LIBRARY

In 1982, “because of MAPPA’s improved financial situation and the Board of Directors efforts to find ways to better serve our membership, [the Board] decided to create a video-tape library and make these tapes available to our membership on a loan basis.” Miami University in Oxford, Ohio, volunteered to serve as the location of a permanent MAPPA tape library. MAPPA member institutions were encouraged to donate copies of any other videotapes that may be of interest to the membership.

Select sessions at annual meetings were videotaped and videos sold to membership after the fact. The first was “Concrete Deterioration” (1982 meeting at IU); next was “Corrosion” (1983 meeting at BGSU). On December 3, 1987, Roger Rowe, Miami University, offered to have Miami serve as a repository for MAPPA records (they already housed the MAPPA Library). Membership agreed MAPPA needed a permanent place. It appears that never happened.

The Library moved to Illinois State University in early 1999 and its inventory and check-out capability became available on-line in March, 1999. With the increase in on-line access to training materials, in 2016 the Training Library was dissolved.

MAPPA Newsletter

The national (NAPPA) newsletter began in 1951 and the second editor was Ed Pardon from the University of Michigan.

The MAPPA newsletter was first published in the early 1980’s. On December 5, 1984, a \$5 annual subscription fee was established for the newsletter. This fee ended a short while later. The newsletter editor position was added to the MAPPA Board on December 8, 1988 and the position has been filled by members around the region since then. In December, 2012, the title of the position was changed to Communications Chair to reflect the evolution of communications methods.

For a short while, ads – or sponsorships – were sold for the newsletter. In 1992, the Board raised the question about the appropriateness of advertising versus sponsorship to support the newsletter. Later that year, the decision was made that advertising cannot be used to support the newsletter. The mode of operation would be at the discretion of the editor, with a goal of breaking even on its printing and distribution. The Board decided that vendor sponsorship of the newsletter could muddy our tax-exempt status and our “significant reserves” could pay for it.

The advent of e-mail and other electronic communication has become the communication vehicle of choice for information-sharing resulting in a discontinuation of the newsletter.

[MAPPA Newsletter archives are on the MAPPA website; several early NAPPA newsletters are included as well]

LOGO

MAPPA's first logo/letterhead was developed on March 24, 1989, by George Preston, Art Institute of Chicago "with print borrowed (pirated) from John Houck's MAPPA Newsletter title print. The birth of this letterhead came suddenly and somewhat unexpectedly, dictated by an exigent necessity to communicate with...a supplier...It was designed, printed and used within a half-



hour..."The first official MAPPA logo was created by Amy Sullivan at Ohio State in 1997 for the annual MAPPA conference hosted by Ohio State that year.

That logo was adopted and used until 2009 when the current logo first appeared in support of the



alignment with the national APPA organization.

MAPPA WEB PAGE

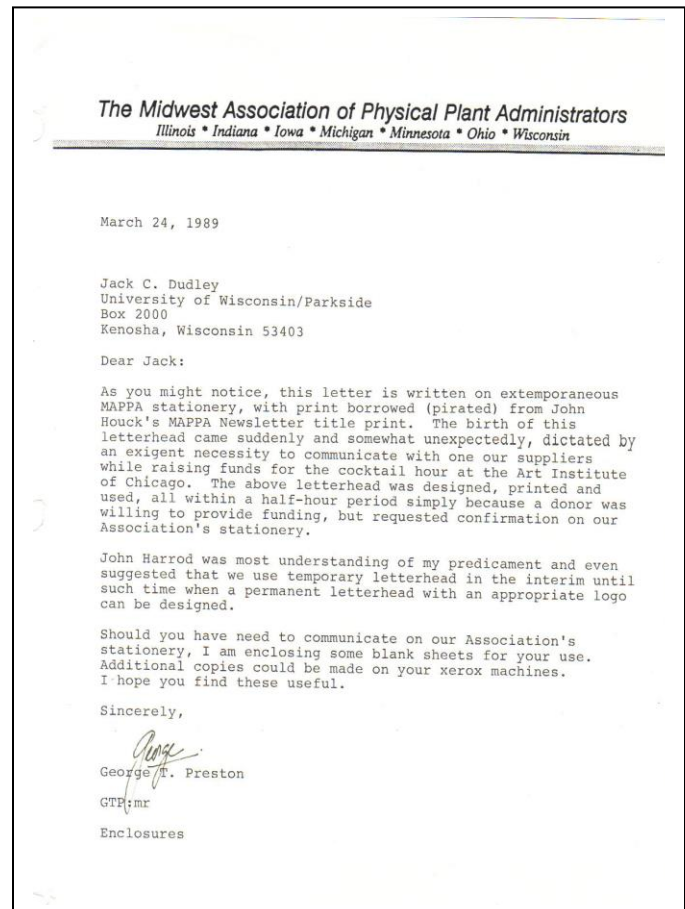
The MAPPA web page began in the early 1990's at Indiana University and moved to Ohio State in the mid-1990's. The new interactive web page went "live" in the fall of 1999, launched by Amy Sullivan.

In 2001, electronic presentations from the annual MAPPA conference were first posted to the web page. On October 5, 2008, the Board approved the move of MAPPA web support from Ohio State to APPA at a cost of \$350 per year. That move actually took place in 2012: <http://mappa.appa.org>

In March 2017, MAPPA collaborated with APPA and mobilized MAPPA's digital materials and listserv functions to the APPA based Causeway. Among many other features, Causeway is a highly collaborative cloud storage and emailing system.

CUSTODIAL COST AND STAFFING GUIDELINES

The Custodial Cost and Staffing Guidelines, now a staple in the APPA publication library and used as a tool by many APPA members, was originally written by four MAPPA members in 1991: Alan Bigger (University of Notre Dame), Kirk Campbell (Carleton College), Bob Getz (William Rainey Harper College) and Jack Dudley (University of Wisconsin – Parkside).



BIG TEN AND FRIENDS

While there are few records of the early years of these groups, we know that the “Big Ten and Friends Directors” have been meeting for several years. Your historian’s opinion is that this group was formed as the national organization grew in an attempt to keep the meetings among the few people in the top leadership positions in facilities at the larger Midwest schools.

Over the years, this concept expanded and there were “Big Ten and Friends” groups for Maintenance, Utilities, Building Services (started in 1958), Parking and Transportation, and Trainers (1980-2020). In 2010, the Big Ten and Friends Building Services Administrators group, in an effort to share resources to keep it going, became an additional track at the annual MAPPA meeting. Since COVID, some of these groups have discontinued.

STATE CHAPTERS

As membership within the region grew, some individual states began meeting amongst themselves to focus on State issues. These meetings, in several states, evolved into State Chapters. Typically, the State Chapters meet during the year at least once, and sometimes co-locate with MAPPA meetings when they are held within the same state. As of 2019, four of the seven states in the region had some form of active state chapter.

Michigan – MiAPPA began in 1967 and grew significantly during the 1980’s.

Iowa – IaAPPA began in 2017.

Illinois – IlAPPA started in 2017.

Minnesota – MnAPPA is in the early organizational stages in 2019.

Wisconsin – WAPPA, while one time a very active organization, is now inactive.

Indiana – IAPPA is also currently inactive.

Ohio – Over the years there have been several attempts to formally organize. As of 2019 there is still no formal “OPPA” as it was called by those who attended.

COVID – 19 PANDEMIC

The COVID – 19 virus arrived in the United States in early 2020. By March 2020, almost everything shut down, including our college campuses. Classes resumed shortly thereafter as on-line learning, staff worked from home where feasible, and communication was carried on via zoom calls.

Facilities were affected in a more unique way, as the physical campus cannot be completely abandoned. Each campus handled this differently depending upon their own needs and circumstances by reducing staff, creative scheduling, increase in on-call staffing, etc. For the most part, employees continued receiving varying levels of pay and benefits. This situation continued for approximately a year, and campus life started to return to a new normal in mid-2021. The national COVID emergency officially ended on May 11, 2023.

During this period, APPA and MAPPA continued to support our membership by holding virtual meetings and conferences – enabling sharing of information between peers. The new normal includes more people working from home (sometimes a few days a week), and facilities staffing adjusting their service delivery more “creatively” than in the past, using lessons learned from the pandemic. As of this writing, things are continuing to evolve.

APPA GOVERNANCE CHANGES 2021

Coincidentally during the pandemic, APPA developed a new strategic plan to better understand members, create a visionary framework, and a future of continuous learning. A task force was created. The APPA Board was realigned and streamlined, some positions were modified, some eliminated, and new positions were created (Chair, Vice Chair, Treasurer, President, and Regional Directors). At the MAPPAs Level, several positions were also realigned by eliminating, combining and creating the following new list of Board Member Positions:

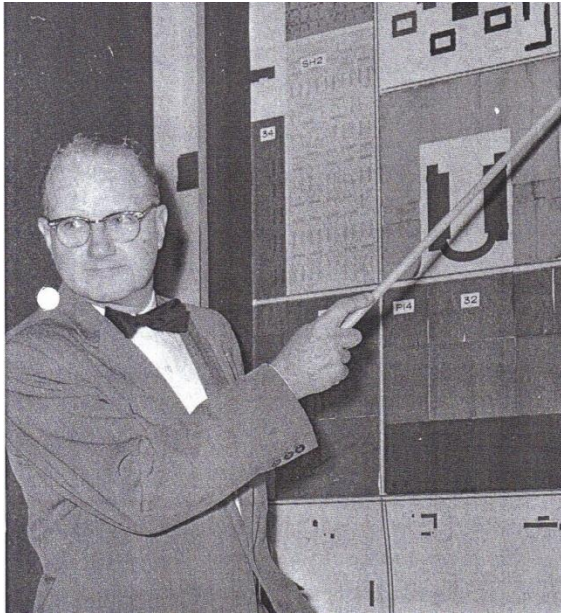
President
Immediate Past President
President Elect
Treasurer
Secretary
Business Partner
APPA Regional Director
Membership and Community Engagement Chair
Professional Development Chair
Historian
Communications Chair
Awards and Recognition Chair
Conference Coordinator
APPA Liaison

CONCLUSION

MAPPAs continues to be a thriving organization of facilities professionals who “get together to share information with colleagues in similar positions at surrounding schools in the Midwest ... to discuss topics of mutual interest” – just as J. M. Fisk imagined in 1914.

PHOTO GALLERY

See MAPPA Meeting photo on page 10 for photos of several early MAPPA officers



**Charles Havens, University of Illinois
MAPPA President 1955-56**



**R. J. Phillips, State University of
Iowa MAPPA President 1957-58**



**Roy Lund, University of Minnesota
Served in interim committee as
MAPPA President, 1958-59; Senior
NAPPA Rep 1957-58**



**A.L. Gallistel, University of Wisconsin
NAPPA President 1956
NAPPA Secretary/Treasurer 1923-58**



**James Marks, University of Michigan,
First APPA President 1915**



**Ted Simon and James Marks,
1975**



**Ted Simon and family, Michigan State University
MAPPA President 1963-64**

(Note: Ted Simon's daughter-in-law, left, is Lou Anna K. Simon who went on to become MSU's 20th president)





**William Whitman, Iowa State University,
MAPPA President 1980-81**



**Gerald McCaig, Indiana State University NW
MAPPA President 1983-84**



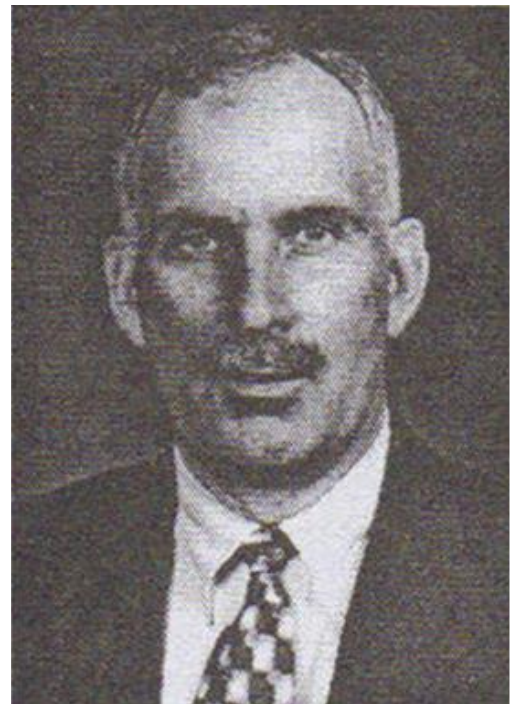
**Chuck Coddling, Bowling Green State University
MAPPA President 1984-85**



**Tom Smith, APPA President 1981, and Jim Murphy, both from Ohio State,
APPA Meeting in Columbus mid-1980's**



**Russ Reister, University of Michigan
APPA Senior Representataive 1982-86**



**Roger Rowe, Miami University
MAPPA President 1990-91**



**Ron Flinn, Michigan State University
MAPPA President 191-92; APPA President
1996**



**Larry Quick, School of the Art Institute of Chicago
MAPPA President 1994-95 and 2000-01**



**Mike Gardner, Butler University; Terry Ruprecht, University of Illinois; Joe Kish, Northeastern Illinois University,
Uim Christenson, University of Michigan; Clay Shetler, Goshen College; Greg Fichter, Indiana University
1997 MAPPA Board**



**Clay Shetler, Goshen College
MAPPA President 2002-03**



**Becky Hines, Ohio State
University MAPPA President 2004-05**



**Chris Ahoy, Iowa State
University
MAPPA President 2003-04
APPA President 2006-07**



Chuck Scott, Illinois State University, MAPPA Presiden 2009-10, APPA President 2016-17 and John Harrod, MAPPA President 1988; APPA President 2000



**Martha May, Purdue University; John Ott, Ohio State University/OARDC; Fred Plant, Valparaiso; Chuck Scott, Illinois State University; Brandon Baswell, Michigan State University; Ralph Zia, Northeastern Illinois University; Jerry Carlson, Butler University
MAPPA Board 2007-08**



Greg Fichter, Indiana University; Martha May, Purdue University; Jerry Carlson, Butler University; Jeri King, University of Iowa; John Ott, Ohio State University/OARDC; Kristie Kowall, Illinois State University; Ralph Zia, Northeastern Illinois University; Ruthann Manlet; University of Minnesota; Brandon Baswell; Michigan State University

MAPPA Board 2008-09



Front: Kris Ackerbauer, University of Wisconsin - Madison; Martha May, Purdue; John Ott, Ohio State University OARDC; Back: Brandon Baswell, Michigan State University; Jerry King, University of Iowa; Jim Bogan, University of Wisconsin – Madison; Fred Plante, Valparaiso University; Kristie Kowall, Illinois State University; Ruthann Manlet, University of Minnesota; Chuck Scott, Illinois State University

MAPPA Board 2009-10



Doug Greenwood, University of Minnesota-Duluth; John Ott, Ohio State University /OARDC; Brandon Baswell, Michigan State University; Kristie Kowall, Illinois State University; Chuck Scott, Illinois State University; Ruthann Manlet, University of Minnesota, Art Chonko, Denison University; Jeri King, University of Iowa; Kris Ackerbauer, University of Wisconsin; Jerry Carlson, Butler University; Charles Darnell, Western Illinois University

MAPPA Board 2010-11



Front row: Ruthann Manlet, University Minnesota; second row: Amy Carnahan, Michigan State University; Brandon Baswell, Michigan State University; third row: Kris Ackerbauer, University of Wisconsin; John Coggins, Spirotherm; fourth row: Mike Hamilton, Iowa State University; Jerry Carlson, Butler University; fifth row: Doug Greenwood, University of Minnesota-Duluth; Becky Hines, Ohio State University-Retired; sixth row: Art Chonko, Denison University; John Ott, Ohio State University/OARDC; top row: Chuck Scott, Illinois State University; KristieKowall, Illinois State University

MAPPA Board 2011-12



Dana Gillon, University of Illinois at Urbana Champaign; Mike Hamilton, Iowa State University; John Ott, Ohio State University/OARDC; John Coggins, Spirotherm; Jerry Carlson, Butler University; Becky Hines, Ohio State University-Retired; James Harrod, University of Wisconsin; Ruthann Manlet, University of Minnesota; Art Chonko, Denison University; Kristie Kowall, Illinois State University; Kris Ackerbauer, University of Wisconsin; Brandon Baswell, Michigan State University; Lowell Bromander, Hamline University

MAPPA Board 2012-13



James Bogan, University of Wisconsin; Mike Hamilton, Iowa State University; Kristie Kowall, Illinois State University; Art Chonko, Denison University; Brandon Baswell, Michigan State University; Lowell Bromander, University of St. Thomas; Ruthann Manlet, University of Minnesota; Dana Gillon, University of Illinois; Jerry Carlson, Butler University; John Ott, Ohio State – Wooster; John Coggins, Spirotherm

MAPPA Board 2013-14



Becky Hines, Ohio State University-Retired; Steve Gilsdorf, Western Michigan University; Dana Gillon, University of Illinois; Kristie Kowall, Illinois State University; Bob Currie, Iowa State University; Anthony McClellan, University of Illinois; Mike Hamilton, Iowa State University; Greg Adams, Marquette University; Lowell Bromander, Hamline University; James Harrod, University of Wisconsin; Art Chonko, Denison University; Jim Bogan, University of Wisconsin; Ed Choklek, FGM Architects

MAPPA Board 2014-15



Front Row: Sarah Ely, University of Michigan; Kristie Kowall, Illinois State University; Bob Currie, Iowa State University; Dana Gillon, University of Illinois; Mike Hamilton, Iowa State University; Greg Adams, Marquette University; Tim Thimmesch, Grand Valley State University; Becky Guelig, University of Wisconsin; Ed Choklek, FGM Architects ; James Harrod, University of Wisconsin; Kris Ackerbauer, University of Wisconsin; Becky Hines, Ohio State-Retired; **Back Row:** Lowell Bromander, Hamline University; Steve Gilsdorf, Western Michigan University; Maggie Hamilton, Iowa State University; Jody Danielson, Iowa State University; Gina Holtzbauer, Iowa State University; Erin Marsh, University of Iowa; Chuck Scott, APPA President-elect

MAPPA Board 2015-16



Front Row: Chuck Scott, APPA President, Illinois State University; Lowell Bromander, Hamline University; Bob Currie, Iowa State University; Greg Adams, Marquette University; Joseph Han, Cleveland State University; Tim Thimmesch, Grand Valley State University; Dana Gillon, University of Illinois Urbana/Champaign; Mike Hamilton, Iowa State University; **Back Row:** Becky Hines, Ohio State – Retired; Doug Laditka, College of Wooster; Sarah Ely, University of Michigan; Becky Guelig, University of Wisconsin; Maggie Hamilton, Iowa State University; Steve Gilsdorf, Western Michigan University

MAPPA Board 2016-17



MAPPA Board
Sept 20, 2017

**Front: Maggie Hamilton, Univeristy of Iowa; xxxxxx; Becky Hines, Ohio State - retired; Nicole Corll, Kent State; Dana Gillon, Univerrsy of Illinois; Steve Gilsdorf, Western Michigan;
Back: Doug Laditka, College of Wooster; Bob Currie , Iowa State University;**



**Back row – left to right: James Bogan, University of Wisconsin - Madison; Doug Laditka, College of Wooster; Tim Thimmesch, Grand Valley State University, Ronald Pond, Mukwonago Area School District; Jack Mumma, Michigan State University; Gerald McGillian, University of Chicago; Art Chonko, Denison University
Front row – left to right: George Hakim, University of Michigan – Flint; Nicole Corll, Kent State University; Steven Gilsdorf, Western Michigan University; Becky Barnes, University of Wisconsin – Madison; Becky Hines, Ohio State University – retired; Brandon Dugan, Cleveland State University**

MAPPA Board 2018-19



L-R: Brandon Dugan, Cleveland State University; Becky Barnes, University of Wisconsin-Madison; Jack Mumma - Michigan State University; Becky Hines - Ohio State University-Retired; Ronald Pond - Mukwonago Area School District; George Hakim - University of Michigan; Jim Bogan – University of Wisconsin;-Madison; Steven Gilsdorf – Wesern Michigan University; Kevin Austin – University of Chicago

MAPPA Board 2019-20



**L-R: Nicole Corll, Dawn Aguilera, Jeff Miller, Jeremy Johnston, Jeremiah Swetel, Brandon Dugan, Dan Ridgway, Jack Mumma, Michelle Holstege, Steven Gilsdorf, Christina Hills
Not in photo: Becky Hines, Jim Klaiber**

MAPPA Board 2022-23

EXHIBIT 1

The following are copies of replies which Mr. Fisk received from persons to whom he wrote about forming an organization:

The University of Nebraska, Lincoln

January 26, 1914

"Replying to your favored communication of the 19th inst. With reference to the formation of a superintendents' organization as you have suggested. It appears to me that a movement of this kind would be decidedly beneficial, not only to the superintendents themselves, but of course to the institutions to which they are connected.

A question has, however, arisen in my mind seeing that the Universities are so widely scattered and so far apart whether we could get enough that would be really interested and enthusiastic to hold together. You will be able to determine this if you are corresponding with them on the subject.

I shall be pleased to co-operate with you; but I am rather uncertain whether I could meet with you this year or not. Later developments will determine.

Kindly let me hear what success you are getting.

With best wishes, I am,
Yours truly,
(signed) Charles E. Chowins

University of Kansas, Lawrence

January 26th, 1914

I have your recent letter relative to the formation of an organization of the managers or superintendents of buildings and grounds of the educational institutions of the country.

I am certainly heartily in favor of your plan, and I am willing, even anxious to do whatever I can to assist in the formation of such an organization. Your plan is unique in that, so far as I know, there has been no such organization formed. But I am convinced that it is practicable, and the meetings can be made of great benefit to the members.

I will be willing to meet with others for this purpose, either in Chicago or St. Louis, and I hope that a date will be set for such a meeting in the near future.

Yours very truly,
(signed) E. F. Crocker, Supt.

Ohio State University, Columbus

January 26, 1914

Replying to your kind favor of the 20th, regarding the organization of the Superintendents of Buildings and Grounds of the various universities of the middle west, I will say that I am heartily in favor of such organization; and believe that much good would come from it. As you say, while we are all trying to do practically the same kind of work, we are probably each one doing it in a different way and by conferences and exchanging our views, it may be possible for some or all of us to gather information, which will be of great value to our institution and help solve problems, which are continually arising, possibly finding a more economical way than if we solved the problems ourselves.

My idea of the organization would be entirely informal, in which the problems which interest each of us would be discussed and probably papers read. I also believe it would be a very good thing to locate the meetings as you suggest. However, if the majority are not in favor of that, it is possible that Chicago can be made the common meeting point.

Hoping that you will be successful in perfecting the organization and assuring you that you can rely on me for such assistance as I can give, I am,

Yours truly,
(signed) W. C. McCracken, Supt.

Purdue University, Lafayette, Indiana

January 27th, 1914

Your letter of January 20th, 1914 to Mr. P. Van Landeghm has been handed to me for reply. I have often thought what a nice thing it would be if we could all know each other. I am heartily in favor of the movement and will be glad to do all I can to help it along. The Building Managers (Sky Scrapers, office buildings, etc.) have such a society already I believe. You can find out by writing Building Management Publishing Co., Dearborn St., Chicago. You perhaps do not recall me, but I remember you quite well. Will be glad to hear from you again.

Yours truly,
(signed) Arthur Dufty

University of Chicago, Chicago, Illinois

Feb. 2, 1914

Yours of January 20th in regard to forming an association of men in charge of the Buildings and Grounds was duly received and should have had an earlier answer, but I was in hopes to have the opportunity to talk the matter over with the Business Manager, under whose direction I work, but did not have a chance, as he was not feeling well and has gone on an extended vacation.

I have been a member of similar organizations in other lines of activity and derived considerable benefit from the papers read, and published afterwards, but found that the real work was done by a few, the tendency being for the others to merely make it an occasion to have a good time at the expense of their employers.

However, if there is a sufficient number taking hold of it to make it worth while, I would be willing to do my share.

Yours truly,
(signed) G. F. Starkweather, Supt.

Iowa State Teachers College, Cedar Falls, Iowa

January 22, 1914

In answer to yours of the 24th with reference to association for the benefit of superintendents of the western universities and colleges, this meets with my approval. I would suggest that a meeting of some kind might be called at Iowa City, as this is about as centrally located as any place I know of.

Mr. Sloss suggested this to me a short time ago when he was here. Anything I can do in the way of working this out would be pleased to assist you at any time. Would like to hear from you further in regard to this matter.

Yours respectfully,
(signed) J. E. Robinson, Supt.

In reply to your letter of January 20th would say that your suggestion of organizing an annual convention of Superintendents of Grounds and Buildings of the west is a good one, and meets with my hearty approval. I have felt for some time that a proposition of this kind would be very helpful.

I was present four years ago in Chicago at the organization of a national convention of Superintendents of Buildings, but I felt at the time that it wasn't what interested me, as the men in convention there were mostly superintendents of large buildings in the city and managers of tenement houses. I would be glad to co-operate with you, and do anything in my power to help you along. I would be glad to hear what progress you are making.

Yours very truly,
(signed) A. W. McConnell"

I have your letter of the 20th inst. I have often thought that such an organization as this which you suggest, would be very interesting and valuable. Can you give me any idea of the number of men who are interested in this? With this information before me, I could better tell whether the meeting would be sufficiently attended to make the trips worth while.

Very truly yours,
(signed) James H. Marks"

EXHIBIT 2

The following is a report written by J. M. Fisk, the founder of what is now APPA, presented at the 1930 annual meeting of the Superintendents of Buildings and Grounds at the Iowa State College at Ames.

[May 19-21, 1930]

To the members of the Superintendents' Organization;

Dear Sirs"

I have been asked by Mr. Crutcher to write a history of our organization.

It is gratifying to a person to have conceived a plan that in after years proves to be a success, therefore, I take great pleasure in knowing that through my efforts, years ago, this group was organized; which organization is now flourishing so nicely.

In reflecting over a period of twenty years, I cannot remember the exact year in which the first meeting was held, but it must have been at least fifteen years ago.

For several successive years our meetings were held in Chicago as this point seemed more convenient for most of us and for quite a few years the following institutions were represented:

Iowa State College by Mr. Sloss
University of Minnesota by Mr. Hilderbrandt
University OF Chicago by Mr. Flook
University of Michigan by Mr. Marks
University of Ohio by Mr. McCracken
University of Missouri by Mr. Westcott
University of Iowa by Mr. Fisk

Later on it was thought advisable to meet each year at a different institution and since then this has been our custom.

Gradually we were able to interest other Universities in our work and each year saw one or more new faces in our organization until today we have grown to considerable size and perhaps for the good of all, large enough.

The good which has come to me, and I hope to others as well, is the real comradeship, one with the other, to be able to put aside all details of the job at home and to meet for a few days with those with whom I could sit and visit and confer with on some particular subject in which I was especially concerned and get some real good advice and information.

During the last fifteen years all of our institutions have grown by leaps and bounds and the problems of the Superintendents have likewise expanded until today the budgets of our departments are nearly equal to the budget of the whole institution fifteen years ago.

I am hopeful, therefore, that the interest in our organization will continue to grow and while some may feel that an effort should be made to make the group National in scope, I am hoping that the membership may be confined to those institutions which are naturally grouped together and having quite similar interests.

The meeting, which is to be held this year at the Iowa State College at Ames, Iowa, will be the second meeting held at that institution. I hope that members, either going to the convention or on their return, may find it convenient to visit me at the State University of Iowa at Iowa City, Iowa.

Yours very truly,
J. M. FISK

EXHIBIT 3

Below is the last recorded history of the Midwest Region prepared in 1956 by E. E. Kinney. Mr. Kinney, who was the first Secretary of MAPPA in 1955, presented his report at the 1956 annual NAPPA ("National Association of Physical Plant Administrators" as it was known at the time) meeting which was held in Madison, Wisconsin.

REPORT OF MIDWEST STATES REGIONAL ASSOCIATION OF PHYSICAL PLANT ADMINISTRATORS OF UNIVERSITIES AND COLLEGES

By E. E. Kinney, Consultant,
Department of Buildings and Utilities,
Michigan State University
[1956]

Compiling the history of an organization many years after its birth is always difficult, and seems doubly so in the case of the Midwest Regional. True enough, we did not formally exist as such until 1955, but I am told that the National Association really started in Chicago as a Midwest group and expanded to its present coast-to-coast size. An article in the 1930 Annual, by J. M. Fisk of Iowa devoting two pages to APPA history states in part: "—I cannot remember the exact year in which the first meeting was held, but it must have been at least 15 years ago" and "For several years our meetings were held in Chicago - with seven schools represented" and "Gradually we were able to interest other Universities - until today we have grown to considerable size (about 28) and perhaps - large enough" But in 1955 we list 174 names, not counting the additional regional members. The title on the fly leaf for 1930 is "Association of Superintendents of Buildings and Grounds of the Central Western Colleges and Universities."

So the Midwest Regional started about 1914 as a small group of Superintendents meeting informally around a dinner table in Chicago, then lost its identity in the mushrooming National, then had a rebirth in 1951. (Some say earlier). Its Constitution, name, officers and boundaries were submitted in 1955 as per Chuck Havens' letter to Wesley Hertenstein under date of March 21, 1955. During the formative years, the burden of planning and executing the Chicago conferences fell on such local men as Chuck Havens, Al Gallistel, Lyman Flook, Ken Weidner, and W. R. Zellner. They functioned not as officers but as hosts and committee on arrangements.

The March 24, 1951 meeting in Chicago (the first in my record) was called to study the welfare of the National Association, with special emphasis on programs, printed minutes, and ethical standards.

The March 14, 1952 meeting at the Chicago Illini Center brought 21 physical plant men together. The chief topic for discussion was the spring conference of the NAPPA to be held at the University of Michigan. A planning committee was appointed consisting of Ed Pardon, chairman, Lester Ries, and Ed Kinney. As usual, many topics were discussed, some laid on the table, others under the table; time proved too short.

Again on March 13, 1953, almost a year to the day, a group of 18 men gathered at the Illini Center in Chicago to discuss the Alabama conference. Because of this, Sam Brewster and Wesley Hertenstein were among the group, as well as President Ed Pardon and Secretary Al Gallistel, thus making, in effect, an augmented Executive Committee meeting. Besides planning the forthcoming Alabama conference, the question of Regionals was raised. It was pointed out that both CUPA, and Business Officers groups use Regionals with great success. A committee of three, Havens, Gallistel, and Elleman was asked to report on Regionals at Auburn in May. Later in the same year, December 4 to be exact, another conference was held in the Illini Center, with an agenda of 48 topics submitted in advance by delegates. It was here that the Midwest group pointed to the need for a two-day conference. An elaborate study of janitor duties and costs among 11 midwest universities was presented by A. F. Ahearn.

The 1954 conference was held November 8 at the Illini Center with an attendance of 26. In this, as well as previous conferences, C. S. Havens was recognized as chairman and W. R. Zellner as Secretary. No formal constitution had as yet been adopted but a letter was addressed by Chairman Havens to all members under date of November 12 giving the high-lites of action taken. A complete set of minutes was prepared and dittoed by Secretary Zellner, dated November 20. It was here that Iowa was included in the Midwest group, reserving freedom of choice within the State. On September 23, just previous to the conference, the members were polled on boundaries, NAPPA representative (Havens was elected), time and place of meeting, and acting chairman. During the conference a committee on constitution was named, with Paul Elleman, chairman, Ben Schaefer as member, to prepare and circulate to the members a suitable draft of the Regional constitution, which was submitted to the National Board March 21, 1955.

The 1955 conference was initiated by chairman Havens by letter of October 6, 1955. Tentative dates and place were suggested, with final approval of November 14 and 15 at Northwestern University in Evanston, just north of Chicago, with Ekberg and Zellner as hosts. Thirty some delegates were present, and a fairly complete set of minutes was published in the November 1955 Newsletter. Our first election of officers gave Paul Elleman the Presidency and Ed. Kinney as Secretary, with C. S. Havens as NAPPA representative to the Board.

In closing, and not as official Midwest business, may I add as an outgrowth of my search for the above historical data, it becomes more convincing that NAPPA should designate three official libraries as depositories for complete sets of the National Minutes (Red Book) and the Newsletter; one Eastern, one Midwest, and one Western (or more if you please). Before it is too late, let's get these files complete.

EXHIBIT 4

James Marks, University of Michigan, was APPA's first President in 1915. In 1975, he met with Ted Simon, Michigan State University and shared some recollections. While several of his facts about APPA are not quite accurate, his personal story and overall comments paint an interesting picture of those early days of APPA.

2/11/75

APPA's roots may go back a bit earlier than the first meeting in 1914, according to James H. Marks, the first president of APPA's parent organization, the Association of Superintendents of Buildings and Grounds.

"The man that organized it was a small man from Iowa, but the invitations came from Wisconsin," Mr. Marks recalled in a discussion with Ted Simon, a former APPA president, about the beginning of the organization.

Mr. Marks' memory of the organizer was accurate. It was John Fisk, a diminutive man from the State University of Iowa at Iowa City.

He remembers the first meeting as one at a small agricultural college on the shore of Lake Mendota, at Madison, Wisconsin. This is the location of the University of Wisconsin. "We had a meeting there of less than ten men, and it was pleasant and profitable," Mr. Marks said.

Mr. Marks was the temporary head of Physical Plant Services at the University of Michigan from 1910 through most of 1916. He now lives in Grosse Pointe Woods, Michigan, a suburb of Detroit. He is retired from a very successful career in private industry which followed his short tenure at the University of Michigan.

Note: Before using this material, refer to the historical letters in the 1934 Proceedings of the Buildings & Grounds Superintendents Association. The letters there indicate Marks' memory may be faulty. *Stan Hecker*

One of his first projects at Michigan was a drive to centralize the buildings and grounds shops. After surveying the deplorable conditions there in 1911, Mr. Marks demanded, "What business could live, in these modern times, working against odds like these?"

When Mr. Fisk, the small man from Iowa, first wrote to him about a possible meeting of college and university plant managers, Mr. Marks sent off an immediate reply in January, 1914. "I have often thought that such an organization as this which you suggest, would be very interesting and valuable," he said.

Mr. Marks' enthusiasm took him to the presidency of the new association at its first official meeting in Chicago in 1914. The following year he hosted the annual gathering at Michigan.

This was quite a progression for a young man who'd been granted his Mechanical Engineering degree only six years earlier, in 1909. But he had proven his abilities even before he was given the buildings and grounds post at Michigan.

His career began with an undergraduate project, an advanced 38-inch reflecting telescope, which he designed and built. The university was so delighted with his telescope that he was asked to build an observatory addition to an existing building to house it.

"The addition they asked for was larger than the existing building," Mr. Marks recalled. "We finished the project within both the budget and the estimate, which was unusual even in those days."

Mr. Marks completed the building as a University employee in 1910 and was appointed the temporary Superintendent of Buildings and Grounds. The telescope he built is still used at Michigan.

Mr. Marks served until 1916, when the Packard Motor Car Company hired him to be a plant engineer. At Packard, he advanced and improved construction scheduling for plant alterations. He substantially reduced the production down-time required to change plant facilities. His work for Packard was innovative, and he helped pioneer modern production and critical path management.

"At one time, we had to build a six-story building in the middle of an operating production plant," Mr. Marks remembered. "To avoid storing materials at the crowded site, we had to schedule delivery at the exact hour material was required."

Mr. Marks rose to be an executive vice-president and retired from the company in 1946. Like many other once-active retirees, he soon grew restive. He formed a consulting company which advised industry on plant expansion and efficiency.

Many top executives and specialists joined Mr. Marks' consulting firm. When he finally closed the firm in 1965, it had become firmly established as a leading industrial consultant. From one office in a Detroit building, Mr. Marks' hobby had grown until it occupied the entire floor.

Mr. Marks now spends half of his retirement in Florida, and half in Michigan. He remains healthy and active, and enjoys visitors.

When told the current APPA membership size, Mr. Marks was astonished. "My goodness, it certainly has grown since we met in Wisconsin with less than ten members!"

EXHIBIT 5

THE MIDWEST REGIONAL ASSOCIATION OF PHYSICAL PLANT ADMINISTRATORS OF UNIVERSITIES AND COLLEGES

CONSTITUTION

NAME AND OBJECT

The official name of this organization shall be "The Midwest Regional Association of Physical Plant Administrators of Universities and Colleges" and its purpose is to promote the common interest in the care and operation of physical plants used by Universities and Colleges within the region, and to foster the professional spirit among the men engaged in this work, and to aid and supplement the work of its parent organization, the "National Association of Physical Plant Administrators of Universities and Colleges".

MEMBERSHIP

Qualification: Membership in the Association shall be open to the Administrators, or principal executives, in responsible charge of operation and maintenance, planning or development of the physical plants of educational institutions of higher learning in the following states: Ohio, Indiana, Michigan, Illinois, Wisconsin, Iowa and Minnesota. All institutions, as defined above, shall be entitled to not more than two members. All institutions, as defined above, even though a branch of another, shall also be entitled to not more than two members.

Participation: Members shall take an active interest by participating in discussion at the meetings, work on committees and attendance at meetings.

Dues: Shall be as determined by the membership.

Suspension: Failure to pay dues or general lack of interest shall be sufficient cause for motion of suspension by the Executive Committee.

Rights and Privileges: A member is entitled to:

- (1) Bring other employees of his institution or department to the Annual Meeting without their paying annual dues.
- (2) Request subjects for discussion at meetings.

OFFICERS

Two officers, to be called President and Secretary-Treasurer, shall be elected for one year, by a majority vote of the members present at the Annual Meeting.

The President:

Powers and Duties:

- (a) He shall preside at all meetings.
- (b) He shall appoint all committees.
- (c) He shall serve as member and chairman of the Executive Committee during his term of office.

MIDWES

The Secretary-Treasurer:

Powers and Duties:

- (a) He shall keep the file of official correspondence.
- (b) He shall advise members of actions of the Executive Committee.
- (c) He shall write memorandum outlining discussions at Annual Meetings and send copies to all regional members.
- (d) He shall collect and dispense funds.
- (e) He shall present annually a financial statement for the current year.
- (f) He shall pay expenses as approved by the Executive Committee.

Executive Committee:

(1) The President, Secretary-Treasurer, the immediate past President, and the regional representative on the National Board of Directors of the NAPPA, shall automatically become the Executive Committee, which shall govern the Regional Association.

(2) Powers and Duties:

- (a) This Committee will rule on questions of policy which arise between meetings, and shall act as the membership committee.
- (b) Authorize expenditures from the Treasury.
- (c) Approve dates and places of meetings after recommendation of the President.

MEETINGS

Members shall meet annually. The month and place of the next Annual Meeting shall be by majority vote of the members present at the Annual Regional Meeting. The exact date within the chosen month shall be set by the Executive Committee.

Voting shall be restricted to members of this Association in good standing, one vote per school only. If an institution is represented by two members, and both choose to vote, each member is entitled to a one-half vote.

AMENDMENTS

This constitution may be amended at any meeting by a two-thirds vote of the members of the Association present and in good standing, provided the proposed amendment has been approved by the Executive Committee and copy of same mailed by the President to the Association members at least thirty (30) days prior to the meeting at which it is to be voted upon.

Dated: March 1, 1955.

EXHIBIT 6

Internal Revenue Service
District Director

Department of the Treasury

P. O. Box 2508
Cincinnati, OH 45201

Date: FEB 13 1998

Midwest Association of Higher Education
Facilities Officers
c/o Northern Illinois University
1700 South Main
Goshen, IN 46526-4724

Person to Contact:
Brett Siereveld
Telephone Number:
513-241-5199
Fax Number:
513-684-5936
Federal Identification Number:
35-1507660

Dear Sir or Madam:

This letter is in response to your request for a copy of your organization's determination letter. This letter will take the place of the copy you requested.

Our records indicate that a determination letter issued in February 1983, granted your organization exemption from federal income tax under section 501(c)(3) of the Internal Revenue Code. That letter is still in effect.

We classified your organization as one that is not a private foundation within the meaning of section 509(a) of the Code because it is an organization described in section 509(a)(2).

This classification was based on the assumption that your organization's operations would continue as stated in the application. If your organization's sources of support, or its character, method of operations, or purposes have changed, please let us know so we can consider the effect of the change on the exempt status and foundation status of your organization.

Your organization is required to file Form 990, Return of Organization Exempt from Income Tax, only if its gross receipts each year are normally more than \$25,000. If a return is required, it must be filed by the 15th day of the fifth month after the end of the organization's annual accounting period. The law imposes a penalty of \$20 a day, up to a maximum of \$10,000, when a return is filed late, unless there is reasonable cause for the delay.

All exempt organizations (unless specifically excluded) are liable for taxes under the Federal Insurance Contributions Act (social security taxes on remuneration of \$100 or more paid to each employee during a calendar year. Your organization is not liable for the tax imposed under the Federal Unemployment Tax Act (FUTA).

Organizations that are not private foundations are not subject to the excise taxes under Chapter 42 of the Code. However, these organizations are not automatically exempt from other federal excise taxes.

Midwest Association of Higher Education Facilities Officers
35-1507660

Donors may deduct contributions to your organization as provided in section 170 of the Code. Bequests, legacies, devises, transfers, or gifts to your organization or for its use are deductible for federal estate and gift tax purposes if they meet the applicable provisions of sections 2055, 2106, and 2522 of the Code.

Your organization is not required to file federal income tax returns unless it is subject to the tax on unrelated business income under section 511 of the Code. If your organization is subject to this tax, it must file an income tax return on the Form 990-T, Exempt Organization Business Income Tax Return. In this letter, we are not determining whether any of your organization's present or proposed activities are unrelated trade or business as defined in section 513 of the Code.

Because this letter could help resolve any questions about your organization's exempt status and foundation status, you should keep it with the organization's permanent records.

Please direct any questions to the person identified in the letterhead above.

This letter affirms your organization's exempt status.

Sincerely,



C. Ashley Bullard
District Director

INTERNAL REVENUE SERVICE
DISTRICT DIRECTOR
P. O. BOX 2508
CINCINNATI, OH 45201

DEPARTMENT OF THE TREASURY

Date:
JAN 13 1998

MIDWEST ASSOCIATION OF HIGHER
EDUCATION FACILITIES OFFICERS
C/O NORTHERN ILLINOIS UNIVERSITY
1700 S MAIN
GOSHEN, IN 46526-4724

Employer Identification Number:
35-1507660

DLN:
17053326761007

Contact Person:
D. A. DOWNING
Contact Telephone Number:
(513) 241-5199

Our Letter Dated:
February, 1983

Addendum Applies:
No

Dear Applicant:

This modifies our letter of the above date in which we stated that you would be treated as an organization that is not a private foundation until the expiration of your advance ruling period.

Your exempt status under section 501(a) of the Internal Revenue Code as an organization described in section 501(c)(3) is still in effect. Based on the information you submitted, we have determined that you are not a private foundation within the meaning of section 509(a) of the Code because you are an organization of the type described in section 509(a)(2).

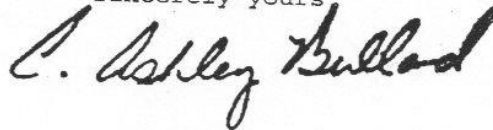
Grantors and contributors may rely on this determination unless the Internal Revenue Service publishes notice to the contrary. However, if you lose your section 509(a)(2) status, a grantor or contributor may not rely on this determination if he or she was in part responsible for, or was aware of, the act or failure to act, or the substantial or material change on the part of the organization that resulted in your loss of such status, or if he or she acquired knowledge that the Internal Revenue Service had given notice that you would no longer be classified as a section 509(a)(2) organization.

If we have indicated in the heading of this letter that an addendum applies, the addendum enclosed is an integral part of this letter.

Because this letter could help resolve any questions about your private foundation status, please keep it in your permanent records.

If you have any questions, please contact the person whose name and telephone number are shown above.

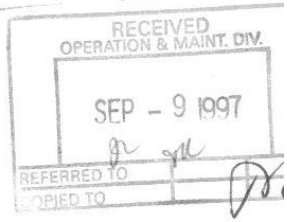
Sincerely yours



District Director

Letter 1050 (DO/CG)

MAPPA - 1300r



CT CORPORATION SYSTEM

1025 Vermont Avenue, NW

Washington, DC 20005

Tel. 202 393 174 September 3, 1997

Fax 202 393 1760

614-242-1751

Clayton E. Shetler
GOSHEN COLLEGE
1700 S. Main
Goshen IN 46526

RE: THE MIDWEST ASSOCIATION OF HIGHER EDUCATION, ET AL.
ORDER # 979692

As you requested, enclosed is/are the following document(s) in reference to the above, filed in the District of Columbia:

- Incorporation Amendment Change of Agent
- Domestic
- Qualification Evidence Evidence
- Dissolution Merger Name Reservation
- Domestic
- Withdrawal Evidence Reinstatement
- LLC Certified Copy Good Standing (s)
- LP Authentication
- Certificate of Compliance Long Form Good Standing
- Two-Year Reporting Forms Annual Report

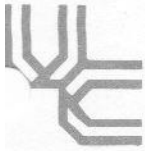
Date of Filing N/A

Please call me if you have any questions regarding this order.

Thank you for allowing us to have been of service.

Renee
Renee P. Scaife
Fulfillment Specialist
/rps

CC: MICHAEL TURANO
CT CORPORATION SYSTEM
CHICAGO



January 25, 1983

Dear Mr. Hoogakker:

Enclosed is a copy of Mr. William Whitman's letter of January 20, 1983 together with the original documents which he had enclosed. These are two Internal Revenue Service forms acknowledging receipt of Application for Recognition of Exemption from Federal Income Tax dated December 13, 1982 and Notice of New Employer Identification Number Assigned dated December 31, 1982.

Mr. Neidhard asked that I send these to you for your records.

If I can be of further help in any way, please let me know.

Sincerely,

A handwritten signature in cursive script that reads "Laverne Zureick".

Laverne Zureick
Secretary to
Mr. Richard Neidhard
University of Cincinnati

lz
encls

IOWA STATE UNIVERSITY
of Science and Technology
AMES, IOWA 50011

Office of the Director
Physical Plant
Telephone 515-294-8079

January 20, 1983

Bill
Mr. Richard D. Neidhard
Assistant Vice President for Business Affairs
University of Cincinnati
Cincinnati, Ohio 45221

Dear Dick:

Enclosed are two Internal Revenue Service forms acknowledging receipt of our Application for Recognition of Exemption from Federal Income Tax dated December 13, 1982 and Notice of New Employer Identification Number Assigned dated December 31, 1982.

I would assume that these should be kept with the permanent records of MAPPA held by the Secretary and that a copy of the identification number sent to the Treasurer for his use.

Very truly yours,

Bill

William W. Whitman
Director

WWW:cs
Enc. (2)

JAN 06 1983

28261750

Date of This Notice

If you inquire about
your account, please refer to this
number or attach a
copy of this notice

12-31-82
Employer Identification Number
52-1273282

MIDWEST ASSOCIATION OF PHYSICAL
PLANT ADMINISTRATORS OF
UNIVERSITIES AND COLLEGES

E
11 DUPONT CIRCLE SUITE 250
WASHINGTON DC 20036

575 0

NOTICE OF NEW EMPLOYER IDENTIFICATION NUMBER ASSIGNED

Thank you for your application for an employer identification number. The number above has been assigned to you. We will use it to identify your business tax returns and any other related documents, even if you have no employees.

Please keep this number in your permanent records. Use the number and your name, exactly as shown above, on all Federal tax forms that require this information, and refer to the number in all tax payments and in tax-related correspondence or documents. You may wish to make a record of the number for reference in case this notice is lost or destroyed.

Note that the assignment of this number does not grant tax-exempt status to nonprofit organizations. For details on how to apply for this exemption, see IRS Publication 557, Tax-Exempt Status for Your Organization, available at most IRS offices.

We appreciate your cooperation.

Department of the Treasury
Internal Revenue Service

P.O. BOX 13163 RM. 615
BALTIMORE, MD 21203

Lead Ref.
JAN 1 1983

DEC 29 1982

CASE NO 52234312EO
CONTROL DATE 11-24-82
DATE OF THIS NOTICE
DEC. 13, 1982

MIDWEST ASSOCIATION OF PHYSICAL
PLANT ADMINISTRATORS OF
UNIVERSITIES AND COLLEGES
11 DUPONT CIRCLE SUITE 250
WASHINGTON, DC 20036

Application for Recognition of Exemption from Federal Income Tax

We will review your application for recognition of exemption from Federal income tax and send you a reply as soon as possible.

If you write again before hearing from us, please refer to the above case number.

Thank you for your cooperation.



March 10, 1983

To: Mr. Charles Coddling (Ohio.) ✓
Mr. John Hoogakker (Ill.) ✓
Mr. John Houck (Iowa) ✓
Mr. Russell Reister (Mich.) ✓
Mr. Frank Rice (Wisc.) ✓
Mr. Norman Rick (Minn.) ✓
Mr. Kenneth Rott (Ind.) ✓

From: R.D. Neidhard *R. Neidhard*
President
Midwest Association of
Physical Plant Administrators

Re: MAPPA Status with the Federal
Internal Revenue Service (IRS)

I received the attached copies of letters from Paul Knapp last week. They explain our present status with the IRS concerning the acceptance of MAPPA as a 501(C)3 tax exempt organization. Bill Whitman started this process a couple of years ago and it's finally come to pass.

My purpose in sending you this information is two fold. First to inform you of the determination and secondly to ask for your help in each of your respective states.

As Paul said in his letter to me, we should contact the states in our region to achieve a sales and use tax exemption. Therefore, would each of you make that contact in your respective State as Paul suggests in the third paragraph of his letter. Get the forms and/or details of procedure and if you can't handle the request yourself, call or write me for direction. I'll ask for a report of progress at our Board meeting in Louisville next summer.

:

RDN:lz
Encls.

CC: Jerry McCaig
George Porter

**The Association of
Physical Plant Administrators
of Universities and Colleges**

ELEVEN DUPONT CIRCLE
SUITE 250
WASHINGTON, D.C. 20036
(202) 234-1662



February 22, 1983

Dick Neidhard
Asst. V.P. for Business Affairs
and Director for Physical Plants
University of Cincinnati
Cincinnati, OH 45221

Dear Dick:

Enclosed is a copy of the IRS letter in which it determines that the Midwest Region has been accepted as a 501(C)3 organization. It is customary for the waiting period for determination that the Region is not a foundation and the attorney should continue to pursue this matter until reconciled on schedule.

It is very important that a copy of this letter be in the possession of the Region President and anyone handling Region funds (Treasurer, host committee chairman, and perhaps others).

One of the next things that the Region can do to take advantage of this new status is to try to achieve sales and use tax exceptions in the states within the Region. This can be explored by writing to the Director, Sales Tax Division, Department of Revenue, for each state. Initially only request "the proper forms by which to request sales tax exemption as a non-profit educational association as exempt from Federal income tax under section 501(c)3 of the Internal Revenue Code." Each state will send you the forms and qualifications.

Dick, if I were you I would assign a member in each region, perhaps located near the state capital, to make this inquiry on behalf of the Region. It could be a good "involvement exercise" without demanding a lot of time on their part. It could serve to give the individual states a feeling of sharing in this new status trip of the region.

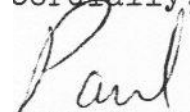
Anyhow, we will keep the original of the letter on file as your office of record since copies of your copy are acceptable and every bit as clear as the original. You should continue to work directly with the attorney, although I'm ready and willing to offer assistance and advice at any time. I wouldn't think of doing anything that would interfere with the Region's autonomy.

"An association, international in scope, founded in 1914, whose purpose is to develop professional standards in the administration, care, operation, planning and development of physical plants used by colleges and universities. . . ."

Dick Neidhard
February 22, 1983
Page Two

Congratulations upon achieving this exalted purest-of-the-pure
tax exempt status. It couldn't happen to a more deserving
Region.

Cordially,



Paul T. Knapp, CAE
Executive Director

PTK/ddv

Enclosure

Internal Revenue Service
District Director

Department of the Treasury

Date: FEB 15 1983

Employer Identification Number:

Accounting Period Ending:

June 30

Foundation Status Classification:

* 509(a)(2)

Advance Ruling Period Ends:

June 30, 1984

Person to Contact:

R. Hutchins

Contact Telephone Number:

(301)962-4773

Midwest Association of Physical
Plant Administrators
11 DuPont Circle, Suite 250
Washington, DC 20036

Dear Applicant:

Based on information supplied, and assuming your operations will be as stated in your application for recognition of exemption, we have determined you are exempt from Federal income tax under section 501(c)(3) of the Internal Revenue Code.

Because you are a newly created organization, we are not now making a final determination of your foundation status under section 509(a) of the Code. However, we have determined that you can reasonably be expected to be a publicly supported organization described in section * See Above

Accordingly, you will be treated as a publicly supported organization, and not as a private foundation, during an advance ruling period. This advance ruling period begins on the date of your inception and ends on the date shown above.

Within 90 days after the end of your advance ruling period, you must submit to us information needed to determine whether you have met the requirements of the applicable support test during the advance ruling period. If you establish that you have been a publicly supported organization, you will be classified as a section 509(a)(1) or 509(a)(2) organization as long as you continue to meet the requirements of the applicable support test. If you do not meet the public support requirements during the advance ruling period, you will be classified as a private foundation for future periods. Also, if you are classified as a private foundation, you will be treated as a private foundation from the date of your inception for purposes of sections 507(d) and 4940.

Grantors and donors may rely on the determination that you are not a private foundation until 90 days after the end of your advance ruling period. If you submit the required information within the 90 days, grantors and donors may continue to rely on the advance determination until the Service makes a final determination of your foundation status. However, if notice that you will no longer be treated as a section * organization is published in the Internal Revenue Bulletin, grantors and donors may not rely on this determination after the date of such publication. Also, a grantor or donor may not rely on this determination if he or she was in part responsible for, or was aware of, the act or failure to act that resulted in your loss of section * status, or acquired knowledge that the Internal Revenue Service had given notice that you would be removed from classification as a section * organization.

P. O. Box 13163, Baltimore, MD 21203

(over)

Letter 1045(DO) (6-77)

If your sources of support, or your purposes, character, or method of operation change, please let us know so we can consider the effect of the change on your exempt status and foundation status. Also, you should inform us of all changes in your name or address.

Generally, you are not liable for social security (FICA) taxes unless you file a waiver of exemption certificate as provided in the Federal Insurance Contributions Act. If you have paid FICA taxes without filing the waiver, you should call us. You are not liable for the tax imposed under the Federal Unemployment Tax Act (FUTA).

Organizations that are not private foundations are not subject to the excise taxes under Chapter 42 of the Code. However, you are not automatically exempt from other Federal excise taxes. If you have any questions about excise, employment, or other Federal taxes, please let us know.

Donors may deduct contributions to you as provided in section 170 of the Code. Bequests, legacies, devises, transfers, or gifts to you or for your use are deductible for Federal estate and gift tax purposes if they meet the applicable provisions of sections 2055, 2106, and 2522 of the Code.

You are required to file Form 990, Return of Organization Exempt from Income Tax, only if your gross receipts each year are normally more than \$10,000. If a return is required, it must be filed by the 15th day of the fifth month after the end of your annual accounting period. The law imposes a penalty of \$10 a day, up to a maximum of \$5,000, when a return is filed late, unless there is reasonable cause for the delay.

You are not required to file Federal income tax returns unless you are subject to the tax on unrelated business income under section 511 of the Code. If you are subject to this tax, you must file an income tax return on Form 990-T. In this letter, we are not determining whether any of your present or proposed activities are unrelated trade or business as defined in section 513 of the Code.

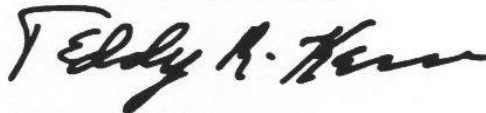
You need an employer identification number even if you have no employees. If an employer identification number was not entered on your application, a number will be assigned to you and you will be advised of it. Please use that number on all returns you file and in all correspondence with the Internal Revenue Service.

Because this letter could help resolve any questions about your exempt status and foundation status, you should keep it in your permanent records.

If you have any questions, please contact the person whose name and telephone number are shown in the heading of this letter.

cc: Bruce R. Hopkins
1511 K Street, NW, Suite 611
Washington, DC 20005

Sincerely yours,



District Director

Letter 1045(DO) (6-77)



UPDATE

**REGIONAL INCORPORATION, GROUP EXEMPTION,
AND INSURANCE PROGRAMS**

REGIONAL INCORPORATION - Currently all APPA Regions have completed the process of incorporation. The two Regions that were not previously incorporated, finalized this process during their 1993 Annual Meeting. We are still waiting on one of the Regions to submit a copy of their incorporation documents with the appropriate state seal.

GROUP EXEMPTION - As soon as all Region incorporation documents are available, APPA will proceed with filing a group exemption application for Internal Revenue Code 501 (c) (3). This is an IRS group exemption for all APPA organizational affiliates (Regions) and their subsidiaries (Chapters). Group exemption is a very pro-forma and simple process, and provides the necessary legal linkages for cooperative efforts such as insurance, joint dues collections, and other activities. A memorandum from the law office of Jenner & Block outlines the process; it is attachment A. The tentative time-frame for completion of the group exemption is December 31, 1993.

INSURANCE PROGRAMS - Upon completion of the group exemption, an insurance package will be developed which will allow Regions to select appropriate coverage based on their individual needs. The insurance package will be available for review at the February Regional Officers Workshop and the APPA Board of Directors. A preliminary list of insurance options is listed as attachment B.

November 10, 1993

Attachments



LAW OFFICES
JENNER & BLOCK

A PARTNERSHIP INCLUDING PROFESSIONAL CORPORATIONS

601 THIRTEENTH STREET, N.W.
TWELFTH FLOOR
WASHINGTON, D. C. 20005

(202) 639-6000
(202) 639-6066 FAX

DIRECT DIAL NUMBER:

CHICAGO OFFICE
ONE 19W PLAZA
CHICAGO, IL 60601
(312) 538-6340
(312) 537-0494 FAX

MIAMI OFFICE
ONE BIRCHMERE TOWER
MIAMI, FL 33131
(305) 430-3533
(305) 430-0000 FAX

LAKE FOREST OFFICE
ONE WESTMINSTER PLACE
LAKE FOREST, IL 60048
(708) 238-4400
(708) 238-7810 FAX

JEFFERSON C. GLASSIE

By Fax

M E M O R A N D U M

TO: Wayne Leroy, APPA
CC: Jerald A. Jacobs
FROM: Jefferson C. Glassie
DATE: November 9, 1993
SUBJECT: Group Tax Exemption

Per your request, we have provided below some general information for obtaining a federal group tax exemption for the regional affiliates of APPA, the Association of Higher Education Facilities Officers.

As we understand it, APPA is a Section 501(c)(3) association that has six regional affiliates, almost all of which are incorporated and several of whom already have obtained tax exempt status under Section 501(c)(3). As you know, we recently assisted SRAPPA with incorporation as a Virginia nonstock, nonprofit corporation. In addition, a few of the regional affiliates also have chapters.

APPA now is considering obtaining a group tax exemption from the Internal Revenue Service to cover all of the regional affiliates, and possibly the chapters as well. The requirements for a group exemption are not burdensome and, in fact, this is one of the easiest and simplest procedures under the Internal Revenue Code.

The main advantage is that the group exemption would specifically cover all of the affiliates, including those who had not already formally filed for tax exemption using the Form 1023 process, but the process is generally less costly and more efficient than an individual tax exemption application. After the process is completed, you will have one IRS tax exemption determination that lists each

of the affiliates. Please note that the group exemption would not adversely affect those affiliates who already obtained an IRS determination of tax exemption, and also would not affect APPA's own Section 501(c)(3) exemption.

In addition, those affiliates who are required to file an annual report on Form 990 (i.e., those with annual budgets over \$25,000) have the option of continuing to file their own Forms 990, or could file a consolidated 990 with the other affiliates. APPA would continue to file its own Form 990.

As noted, the group exemption application process is quite simple. The application consists of a letter to the IRS signed by an officer of APPA, which confirms to the IRS that the organizations to be covered under the group exemption are affiliated with APPA. Included with the letter are descriptions of the purposes and activities of the affiliates, financial information, the affiliates' tax ID numbers, copies of their governing instruments (such as charter or Articles of Incorporation), and certain other information. The principle officer of each affiliate also must sign a document confirming that APPA as the national association has been given the authority to file for the group exemption.

We have prepared group exemption applications for many association clients, and will provide you with a simple package explaining the process further, listing the information required, and including the form documents to be signed by the appropriate officers of APPA and the affiliates.

We should discuss further whether the chapters of the affiliates should also be covered by the group exemption.

Please let me know if you have any questions.

RECOMMENDED INSURANCE PROTECTION

For

APPA Regions and ChaptersCommercial General Liability: Coverage \$1,000,000

Insures against third party claims for bodily injury or damage to property of others for which you may become liable and which arise out of your operations/activities. Cost/yr \$300-500

Blanket Dishonesty Bond: Increments of \$100,000

Provides bonding protection for all officers on loss of money, securities and other property of the insured, resulting directly from fraudulent or dishonest acts committed by an officer acting alone or in collusion with others. Minimum amt \$200

Directors and Officers Liability: Coverage \$1,000,000

Protects officers and directors of an organization against damages from claims resulting from negligent or wrongful acts in the course of their duties. It also covers expenses incurred in defending lawsuits arising from alleged wrongful acts of directors or officers. Cost/yr \$1,200-1,400

Meeting/Show Cancellation Insurance: Increments of \$100,000

Covers your net loss or expenses, costs and/or commitments resulting from cancellation, postponement, or curtailment due to any cause beyond your control except for financial causes and/or lack of support. Cost per Meeting \$400

Business Travel Coverage \$150,000 per occurrence

Covers Travel of Board, Committees, Staff and others traveling on official business.

Cost/yr \$200-400

GOVERNMENT OF THE DISTRICT OF COLUMBIA
DEPARTMENT OF CONSUMER AND REGULATORY AFFAIRS
BUSINESS REGULATION ADMINISTRATION



MAR 2 1992

TO ALL ANNUAL REPORT FILERS:

1. Annual Reports must be received in this office prior to close of business, 3 p.m. April 15, 1992, or postmarked by April 15, 1992.
2. Please BE SURE THAT THE REPORT FORM IS SIGNED! Failure to have the report signed is the most common reason for rejection!
3. BUSINESS CORPORATIONS: NOTE THAT THE FILING FEE IS \$100.00. This applies to all business corporations, regardless of whether the corporation is incorporated in the District of Columbia or elsewhere, and regardless of the amount of stock a corporation is authorized to issue.
4. Changes to the name of the registered agent or the address of the registered agent cannot be made on the Annual Report form. If the corporation needs to file a Statement of Change form to effect such a change, send a self stamped envelope to the Corporations Division and request that the Statement of Change form be mailed to you.
5. Please make your check payable to D. C. Treasurer. A fee of \$50.00 will be charged for dishonored checks effective February 1, 1992.
6. Before you send your report back to us, please make a copy for your files and note the date of mailing.

Thank you for your cooperation.

Mailing Address:

DCRA
Corporations Division
P.O. Box 37200
Washington, D.C. 20013-7200

Location:

614 H Street, N.W., Room 407
Washington, D.C. 20001
(202) 727-7294

Info / Document #
(202) 727-7283

** FACSIMILE SERVICE STATION ** 021 P01

1993-12-10 15:39 09 128 4567

EXHIBIT 7

023322 1157

OFFICE OF RECORDER OF DEEDS, D. C.
Corporation Division
515 D Streets, N. W.
Washington, D. C. 20001

CERTIFICATE

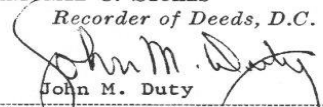
THIS IS TO CERTIFY that all provisions of the District of Columbia Non-profit Corpora-
tion Act have been complied with and ACCORDINGLY this Certificate of Incorporation

is hereby issued to the MIDWEST ASSOCIATION OF PHYSICAL PLANT ADMINISTRATORS OF
UNIVERSITIES AND COLLEGES

as of the date hereinafter mentioned.

Date June 9, 1982

MARGUERITE C. STOKES
Recorder of Deeds, D.C.



John M. Duty
Superintendent of Corporations

GOVERNMENT OF THE DISTRICT OF COLUMBIA
MARION S. BARRY, JR., *Mayor*
APRIL 1981

81-P7036
FORM RD-C 55

FILED FEE
INDEXING FEE

2.00
12.50

ARTICLES OF INCORPORATION
OF THE
MIDWEST ASSOCIATION OF PHYSICAL PLANT ADMINISTRATORS
OF UNIVERSITIES AND COLLEGES

To: The Recorder of Deeds, D.C.
Washington, D.C.

We, the undersigned natural persons of the age of twenty-one years or more, acting as incorporators of a corporation, adopt the following Articles of Incorporation for such corporation pursuant to the District of Columbia Non-profit Corporation Act:

FIRST: The name of the corporation is the MIDWEST ASSOCIATION OF PHYSICAL PLANT ADMINISTRATORS OF UNIVERSITIES AND COLLEGES.

SECOND: The period of duration is perpetual.

THIRD: The objects and purposes for which the corporation is organized and operated are to develop and maintain high standards in the administration, care, operation, planning and development of physical plants used by institutions of higher education; to promote professional ideals and standards to better serve the objectives of higher education; to supplement and assist the work of the Association of Physical Plant Administrators of Universities and Colleges in the Midwest region; and to engage in such other activities as may be necessary and proper to accomplish the foregoing objects and purposes, not without the scope of the subsequent paragraph hereof.

FILED JUN 9 1982
BY *[Signature]*

The corporation is organized and operated exclusively for charitable and educational purposes within the meaning of sections 170(c)(2)(B), 501(c)(3), 2055(a)(2), and 2522(a)(2) of the Internal Revenue Code of 1954. No part of the net earnings of the corporation shall inure to the benefit of or be distributable to its directors, officers, other private individuals, or organizations organized and operated for a profit (except that the corporation shall be authorized and empowered to pay reasonable compensation for services rendered and to make payments and distributions in furtherance of the purpose as hereinabove stated). No substantial part of the activities of the corporation shall be the carrying on of propaganda or otherwise attempting to influence legislation, and the corporation shall be empowered to make the election authorized under section 501(h) of the Internal Revenue Code of 1954. The corporation shall not participate in or intervene in (including the publishing or distribution of statements) any political campaign on behalf of or in opposition to any candidate for public office. Notwithstanding any other provision herein, the corporation shall not carry on any activities not permitted to be carried on --

(a) by an organization exempt from federal income taxation under section 501(a) of the Internal Revenue Code of 1954, as an organization described in section 501(c)(3) of such Code,

(b) by an organization described in sections 509(a)(1), (2), and/or (3) of the Internal Revenue Code of 1954 (as the case may be), and/or

(c) By an organization, contributions to which are deductible under sections 170(c)(2), 2055(a)(2), or 2522(a)(2) of the Internal Revenue Code of 1954.

FOURTH: To further the corporation's objects and purposes, the corporation shall have and shall exercise all the powers conferred by the District of Columbia Non-profit Corporation Act not without the scope of Article THIRD hereof. Without limiting the generality of the foregoing, the corporation shall have the power to sue and be sued, to own, to take title to, receive and hold, lease, sell and resell, in fee simple or otherwise, property, real, personal or mixed, wherever situated or however acquired, without limitation as to amount or value. The corporation shall have authority to encumber property by deed of trust, pledge or otherwise; to borrow money and secure payment of same by lien or liens on the realty or personal property of the corporation; to lease, build, or erect, remodel, repair, construct and/or reconstruct any and all buildings, houses, or other structures necessary, proper or incident to the carrying out of the objects and purposes stated herein. The corporation shall have full powers of management, investment, reinvestment, and the collection of all rents, revenues, issues and profits arising therefrom.

FIFTH: The corporation shall have members.

SIXTH: The designation of each class of members, and the qualifications and rights of the members of each class, are as follows: Voting members of the corporation shall consist of (1) institutions of higher education in the states of Illinois,

Indiana, Iowa, Michigan, Minnesota, Ohio and Wisconsin, each of which shall (a) qualify as a governmental unit under section 170(c) of the Internal Revenue Code of 1954 or as an organization exempt from federal income taxation under section 501(a) of such Code as an organization described in section 501(c)(3) of such Code and (b) maintain the position of a principal administrator in direct charge of the physical plant or buildings and grounds of such institution, and (2) systems of institutions of higher education, each of which shall (a) qualify under the foregoing 1(a) and (b) maintain the position of a physical plant administrator who supervises the principal administrators in direct charge of the physical plants or buildings and grounds of the institutions within such system, as either or both of such memberships may be more particularly described in the corporation's bylaws, each of which shall have one vote. The corporation may have one or more classes of non-voting members, as shall be provided in the bylaws.

SEVENTH: The manner of election of the directors of the corporation shall be as provided in the bylaws.

EIGHTH: The officers and directors of the corporation shall have full authority, consistent with these articles and the corporation's bylaws, to regulate the internal affairs of the corporation and to establish its policies. On dissolution or final liquidation, the Board of Directors shall, after paying or making provision for the payment of all the lawful debts and liabilities of the corporation, distribute all the assets

of the corporation to one or more of the following categories of recipients as the Board of Directors of the corporation shall determine:

(a) a non-profit organization or organizations, which may have been created to succeed the corporation, as long as such organization or each of such organizations shall then qualify (1) as a governmental unit under section 170(c) of the Internal Revenue Code of 1954 or (2) as an organization exempt from federal income taxation under section 501(a) of such Code as an organization described in section 170(c) (2) and 501(c) (3) of such Code; and/or

(b) a non-profit organization or organizations having similar aims and objects as the corporation and which may be selected as an appropriate recipient of such assets as long as such organization or each of such organizations shall then qualify (1) as a governmental unit under section 170(c) of the Internal Revenue Code of 1954 or (2) as an organization exempt from federal income taxation under section 501(a) of such Code as an organization described in sections 170(c) (2) and 501(c) (3) of such Code.

NINTH: References herein to sections of the Internal Revenue Code of 1954, as amended, are to provisions of such Code as those provisions are now enacted or to corresponding provisions of any future United States internal revenue law.

TENTH: The address of its initial registered office is 3805 Legation Street, N.W., Washington, D.C. 20015, and the

name of its initial registered agent at such address is G. Richard Biehl.

ELEVENTH: The number of directors constituting the initial Board of Directors of the corporation is eight and the names and addresses of the persons who are to serve as the initial directors until the first annual meeting or until their successors be elected and qualified are:

<u>Name</u>	<u>Address</u>
Charles L. Coddling	707 West Wooster Street Bowling Green, Ohio 43402
Robert H. Lindsay	5406 Flad Avenue Madison, Wisconsin 53711
Gerald E. McCaig	18428 Lange Street Lansing, Illinois 60438
Richard D. Neidhard	2825 Westbrook Drive Cincinnati, Ohio 45211
Frank J. Rice, Jr.	6117 Driftwood Avenue Madison, Wisconsin 53705
Norman L. Rick	2328 Woodland Avenue Duluth, Minnesota 55802
William W. Whitman	R.R.1 - Skycrest Drive Ames, Iowa 50010
Kenneth A. Rott	R.R. 2, Box 144 Yorktown, Indiana 47396

TWELFTH: The name and address of each incorporator is:

<u>Name</u>	<u>Address</u>
Frank J. Rice, Jr.	6117 Driftwood Avenue Madison, Wisconsin 53705
Richard D. Neidhard	2825 Westbrook Drive Cincinnati, Ohio 45211
William W. Whitman	R.R. 1 - Skycrest Drive Ames, Iowa 50010

Frank J. Rice, Jr.

Richard D. Neidhard

William W. Whitman

Incorporators

: : SS

I, Marilyn S. Bodd, a Notary Public, hereby certify that on the 21 day of May, 1982, personally appeared before me Frank J. Rice, Jr., who signed the foregoing document as incorporator, and that the statements are true.

Marilyn S. Bodd
Notary Public

My Commission expires: March 23, 1986

STATE OF OHIO
COUNTY OF HAMILTON

: : SS

I, Melany Stinson, a Notary Public, hereby certify that on the 28th day of MAY, 1982, personally appeared before me RICHARD D. NEIDHARD, who signed the foregoing document as incorporator, and that the statements are true.

Melany Stinson
Notary Public
MELANY STINSON

Notary Public, State Of Ohio
My Commission expires: My Commission has no expiration date
Section 147.03 B, C.

: State of Iowa : SS

I, Caroline M. Swanson, a Notary Public, hereby certify that on the 2nd day of June, 1982, personally appeared before me William W. Whitman, who signed the foregoing document as incorporator, and that the statements are true.

Caroline M. Swanson
Notary Public

My Commission expires: September 30, 1984

EXHIBIT 8

GOVERNMENT OF THE DISTRICT OF COLUMBIA
DEPARTMENT OF CONSUMER AND REGULATORY AFFAIRS
BUSINESS REGULATION ADMINISTRATION



CERTIFICATE

THIS IS TO CERTIFY that all applicable provisions of the DISTRICT OF COLUMBIA NONPROFIT CORPORATION ACT have been complied with accordingly, this **CERTIFICATE of AMENDMENT** is hereby issued to

**MIDWEST ASSOCIATION OF PHYSICAL PLANNING
ADMINISTRATORS OF
UNIVERSITIES AND COLLEGES
NAME CHANGE TO:
MIDWEST ASSOCIATION OF HIGHER EDUCATION
FACILITIES OFFICERS
(MAPPA)
as of DECEMBER 26th, 1995.**

Hampton Cross
Director

Katherine A. Williams
Acting Administrator
Business Regulation Administration


Patricia E. Grays
Acting Superintendent of Corporations

ARTICLES OF AMENDMENT
to the
ARTICLES OF INCORPORATION

The Midwest Association of Physical Plant Administrators of Universities and Colleges

To: Department of Consumer and Regulatory Affairs
Washington, D.C. 20001

Pursuant to the provisions of the District of Columbia Non-Profit Corporation Act, the undersigned adopts the following Articles of Amendment to its Articles of Incorporation:

- FIRST: The name of the corporation is: ~~The Midwest Association of Higher Education~~ ^{MC}
~~Facilities Officers (MAPPA)~~ ^{THE MIDWEST ASSOCIATION OF PHYSICAL PLANT}
~~ADMINISTRATORS OF UNIVERSITIES AND COLLEGES~~
- SECOND: The following amendment of the Articles of Incorporation was adopted by the Corporation in the manner prescribed by the District of Columbia Non-Profit Corporation Act:

In order to remain consistent with the recent name change of our national organization APPA, the corporate name on the Articles of Incorporation for the Midwest Association will be changed from "The Midwest Association of Physical Plant Administrators of Universities and Colleges" to "The Midwest Association of Higher Education Facilities Officers (MAPPA)."

- THIRD: The amendment was adopted in the following manner:

The amendment was adopted at a meeting of members held on October 16, 1991 at which a quorum was present, and the amendment received at least two-thirds of the votes which members present or represented by proxy at such meeting were entitled to cast.

Date 12/7/91

The Midwest Association of Physical
Plant Administrators of
Universities and Colleges
Corporate Name

By Michael D. [Signature]
Its President or Vice President

Attest:
[Signature]
Its Secretary or Assistant Secretary

26 DEC 1991
[Signature]

EXHIBIT 9

DRAFT

APPA/Region Affiliation Agreement

This affiliation agreement is made between APPA, the Association of Higher Education Facilities Officers, a non-profit corporation with offices in Alexandria, VA and - REGION NAME -, a non-profit organization with offices at - CITY NAME -, for mutual consideration, the receipt and adequacy of which are acknowledged by - PRESIDENT - of APPA and - PRESIDENT - of - REGION NAME -, a region, who agree as follows:

Charter

Term. The term of the agreement begins on the date indicated below and continues until revoked or cancelled by either party to the agreement with a minimum of 60 days notice to either party. Notification of such intent must be received in writing. Intellectual Property. This grant of a charter by APPA to - REGION NAME - includes a limited right to use certain intellectual property of APPA, such as its trademarks or copyrights, subject to the terms and conditions of this agreement.

Service

APPA, for fair compensation, will at the other party's request, provide various services which include but not be limited to registration, membership database and program resources. The exact services provided by APPA to - REGION NAME - will be listed on an appendix to this agreement. The list of services and respective costs available to the - REGION NAME - will be kept current by APPA staff.

Membership

Members of APPA may be members of -REGION NAME -as well, or may be members of exclusively of - REGION NAME -, in accordance with the provisions of - REGION NAME - procedural handbook.

OBLIGATIONS OF -REGION-

Regional status and purposes. -REGION NAME- warrants that it will conduct all of its activities under this agreement in accordance with the applicable legal and ethical standards and will have as its purposes those in the APPA and - REGION NAME - by bylaws.

Separate Entities: Indemnification

1993-12-10 16:24 09 123 4567 ** FACSIMILE SERVICE STATION ** 026 P03

Separate entities. - REGION NAME - and APPA agree that they are and will remain, separate entities and that no partnerships or agency is created by virtue of this agreement. Neither is authorized to incur any liability, obligation, or expense on behalf of the other. Indemnification. APPA agrees to indemnify and hold harmless - REGION NAME -, it officers, directors, agents, and members and employees, from liability, obligation, cost of expense which might arise by reason of any omission by - REGION NAME -.

Revocation or Surrender of Agreement

Revocation of agreement. The agreement granted by APPA to - REGION NAME - will remain in full force and effect, unless revoked by APPA or surrendered by delivering notice of its intention to do so at least 60 days in advance of the effective date of the action.

Miscellaneous

Entire agreement. This agreement is the entire agreement between APPA and - REGION NAME - with respect to the subject matter of the agreement.

Controlling law. This agreement will be governed by the laws of the state of Virginia.

President of APPA

Date: _____

President of - NAME OF REGION -

Date: _____

Executive Vice President of APPA

Date: _____

4/28/93

1993-12-10 16:24 09 123 4567 ** FACSIMILE SERVICE STATION ** 026 P

MAPPA and Big 10 + Friends Trainers

"Partners in Educational Programming"



Submitted by:

MAPPA Reps

Jim Demarest
Terry Ruprecht

Big 10 + Friends Reps

Robert Beck
Jeff Buenting
Cheryl Hoch

December 4, 1998

PROPOSAL:

Bring together a team of individuals from two existing organizations (MAPPA, Big 10 Trainers) for the purpose of accomplishing short and long term training and education objectives and Big 10 + Friends Trainers membership in general and MAPPA institutions in specific.

BACKGROUND:

In September of 1998, members of the Big 10 + Friends Facilities Trainers were invited. Officers Terry Ruprecht, recent President-Elect and then Board Secretary, and Jim Demarest, Executive Director, provided input into MAPPA efforts to offer quality educational opportunities at an affordable cost to member institutions. This was a logical and cooperative effort between these two closely related organizations. MAPPA's emphasis on educational offerings at the regional and local level and the Big 10 + Friends Trainers providing a network and education for staff development professionals to benefit university faculty and MAPPA member institutions.

A meeting was held in Champaign, on the University of Illinois campus. Jeff Buenting was the coordinator and facilitator. Terry Ruprecht and Jim Demarest also took part in a joint discussion about MAPPA educational programming improvement that the trainers group had arrived at earlier in the year.

The initial focus of the discussion among the trainers group was how to improve the Professional Educational Training Series (PETS). This MAPPA-funded program was designed to offer educational opportunities to members from small universities and colleges with limited budgets. Much of the discussion centered around a regional "drive-in" workshop concept. MAPPA board members had not been pleased with the program's low utilization and did not feel it was meeting stated goals. The essence of how the program evolved is that trainers expressed concern over generic workshop offerings, regardless of price, and the need for specific skill development or performance improvement needs of the intended audience. The group felt that available funds could be put to better use by first helping institutions learn how to assess their needs by developing training events which would address those needs.

Further, the idea of an ongoing relationship between MAPPA and Big 10 + Friends Facilities Trainers was widely embraced. MAPPA would benefit from the involvement of education/training specialists in their education efforts. Big 10 + Friends could fill that role and benefit from quality learning opportunities as a result from this partnership. When presented with the concept of a proposed partnership at the October meeting, the MAPPA board members were receptive and asked for a formal proposal to present at the next meeting in South Bend.

OBJECTIVES:

Objective #1 - Establish a partnership between MAPPA and the Big 10 + Friends Trainers for the mutual benefit of both organizations and to identify and address the education/training needs of MAPPA member institutions for the purpose of improving organizational performance.

Objective #2 - Develop and administer a program to make existing training and education accessible and available to MAPPA member institutions.

Objective #3 - Serve as a clearinghouse for the sharing of resources and the development of more effective short and long-term training/education programming for the MAPPA region.

Objective #4 - Develop a Performance/Training Needs Assessment Model for the purpose of assisting college and university facilities departments in improving overall organizational effectiveness and to enhance the Education Committee's role of offering timely educational programming that meets the specified need of MAPPA institutions.

ACTION PLANS:

Proposed Action Plan for Objective #1 - Charter an Education Committee (effective January/February, 1999) to address, assess, analyze, develop, and promote educational and training opportunities/ programs that meet the specified needs of the MAPPA member institutions.

It is recommended this committee be comprised of 8 individuals (including the chair) ... with representation from MAPPA and Big 10 + Friends Trainers. Consideration should be given to including individuals from smaller institutions. It is further recommended the MAPPA Representative to the APPA Education Program Committee serve as the chair for this committee. Each respective organization will then appoint or elect the balance of the committee to serve two or three-year terms. Regarding the initial appointment/election only, half of the representatives should serve three-year terms. Staggering the terms will ensure continuity of committee works in progress.

With the approval of both organizations, the committee will meet three to four times per year as necessary. Two of these meetings will correspond with the annual conferences for each organization (Big 10 + Friends in late May/early June, MAPPA in late September/October). Locations for additional meetings could be decided by the chair.

The committee will recommend its own agenda, priorities, goals, and strategies necessary to accomplish the additional objectives outlined in this proposal and any developed in the future. Both organizations will be apprised of committee progress at their respective conferences each year, through the MAPPA newsletter when appropriate, via mailings, etc.

The committee will propose to the MAPPA Board recommended training/education programming and request funding as needed.

Proposed Action Plan for Objective #2 - It is recommended the Education Committee survey MAPPA and Big 10 + Friends membership regarding existing training at their institutions (i.e., who, what, where, how, why, etc.). With this information, the Education Committee can establish training contacts at MAPPA member institutions to create a comprehensive "Calendar of Events" on the Web. This calendar could announce the dates and times of training and education programs offered primarily at the larger institutions.

The committee should identify a host site for the maintenance of this calendar and encourage the training contacts at each institution to send program information to this host site for inclusion on the calendar. This Web address will be distributed to the membership of both organizations on a regular basis to remind them of this service.

It is further recommended that the Education Committee facilitate the expansion of the MAPPA Trainers Network database (maintained by Indiana University) and promote its use. All institutions will benefit from shared resources designed to improve the performance of facilities organizations.

Proposed Action Plan for Objective #3 - It is

Committee serve as consultants to research and recommend (as appropriate sites, teachers/trainers and assessment methods for training events that will institutions.

The committee will also act as coordinators to initiate the development opportunities for members of both organizations. It is recommended the Plan Based on thorough research and evaluation, recommendations will be made should be changed, or if it is viable.

It is further recommended the committee serve to educate members (mailings, publications, presentations, etc.) as to what constitutes "quality training topic, etc. and raise membership awareness as to where and how training is organizational goals/changes/improvements, as well as when training is needed.

The committee will assist in identifying at least one representative programming committee for the MAPPAs conferences each year and at least one member serve on the programming committee for the Big 10 + Friends conferences. The committee will serve as a resource and, with assistance from both organizations, promote

Proposed Action Plan for Objective #4 - It is

Committee examine needs assessment models utilized by facilities departments and respected organizations outside the academic arena. Selected representatives will conduct "Trainer" workshops on the needs assessment process and report back to the committee. With the expertise acquired from this work, the committee will build an Assessment Plan for member institutions.

The committee will then recommend facilitators and appropriate sites for a needs assessment model to identify and prioritize specific performance/training needs. Committee members will work with facilitators and on-site drive-in workshop coordinators. They can also identify and propose a list of recommended training consultants at their campus. A framework can be developed where MAPPAs institution representatives will serve on the Assessment Committee. The committee can use these results to assist in developing future

CONCLUSION:

Facilities organizations are recognizing more than ever before that training, when done correctly, can be a very potent tool for improving departmental performance. Some institutions have been able to establish full-time permanent training positions - even training offices with equipment and budgets - to help their organization improve its internal operations and, consequently, its support of the institution's mission.

However, many other institutions have been unable to channel the needed resources to facilities training efforts. Their organizations are forced to get along without the kind of training programs they need. They must unwillingly ignore certain needs or address those needs only in part.

What is the solution to this dilemma? *Through the joint efforts of individuals who specialize in staff development and performance improvement, and those who have broad experiences in the administration of facilities services at colleges and universities, we can provide educationally sound learning experiences at reasonable costs for members of both organizations and the institutions they represent.*

There is much synergy to be gained from these two organizations, MAPPA and Big 10 + Friends Facilities Trainers, joining together to achieve common objectives. The ultimate goal of both organizations is excellence in all we do. The foundation of that excellence is performance, and performance results from a well trained workforce. By combining the resources found in these two organizations, we can maximize our opportunities for success.

In addition to the obvious benefits both organizations will receive, MAPPA and Big 10 + Friends could also support, promote, and participate in the activities and events of the other. The establishment of this partnership, and the mission of this proposed Education Committee, could also serve as a model for other APPA regions in promoting shared resources and a team approach for the development of identified training/education programs.

APPENDIX 1
MAPPA Conferences

Year	City	Host	Theme	Income	Expense	Surplus/(Deficit)	Notes
1955	Chicago, Illinois						
1956	Chicago, Illinois						
1957	Chicago, Illinois						30 attendees, 25 schools
1958	Chicago, Illinois			\$60.00	\$11.30	\$48.70	36 attendees, 33 schools
1959	Chicago, Illinois						
1960	Chicago, Illinois						
1961	Chicago, Illinois						
1962-1981	No info						
1982	Merrillville, Indiana	Indiana University Northwest		\$9,219.46	\$9,973.59	\$(754.59)	
1983	Bowling Green, Ohio	Bowling Green State University		\$7,370.00	\$7,163.08	\$206.92	88 members, 22 wives
1984	Champaign, Illinois	University of Illinois – Urbana Champaign		\$7,951.98	\$7,776.93	\$175.05	78 members, 21 spouses
1985	Oxford, Ohio	Miami University		\$11,240.00		\$201.88	102 members, 37 spouses
1986	Grand Rapids, Michigan	Grand Valley State College			\$15,526.64	\$(4,739.28)	
1987	Indianapolis, Indiana	Butler University		\$11,445.00		\$200.00	95 members, 34 spouses
1988	Cincinnati, Ohio	Xavier University		\$13,292.00	\$9,759.52	\$3,532.48	85 members, 20 spouses
1989	Chicago, Illinois	University of Chicago, School of the Art Institute of Chicago, Medical College of Wisconsin		\$23,774.44	\$23,581.87	\$247.11	
1990	Racine, Wisconsin	University of Wisconsin-Parkside, University of Wisconsin-Milwaukee, Marquette		\$32,200.00	\$27,434.00	4766.00	16 booths
1991	St Paul, Minnesota	Bethel College and Seminary, Carleton College, St. Olaf College		\$36,312.00	\$34,500.00	\$1,812.00	105 members, 30 booths
1992	Iowa City, Iowa	University of Iowa, Drake University		\$41,166.00	\$21,169.00	\$19,997.00	101 members, 20 spouses, 42 booths
1993	East Lansing, Michigan	Michigan State University		\$38,935.00	\$32,171.00	\$6,764.00	124 members, 16 spouses, 33 booths
1994	West Lafayette, Indiana	Purdue University		\$27,096.23	\$31,853.45	\$(4,757.22)	111 members, 32 booths
1995	Madison, Wisconsin	University of Wisconsin-Madison		\$37,594.45	\$31,433.20	\$6,131.25	167 members, 15 spouses, 18 booths

1996	Champaign, Illinois	University of Illinois – Urbana Champaign	Workplace of the 90's	\$53,726.00	\$44,847.69*	\$12,056.68	149 members, 19 spouses, 34 booths
1997	Columbus, Ohio	Ohio State University	Building the Future on the Foundation of the Past	\$62,981.60	\$61,344.50	\$2,006.68	142 members, 14 spouses, 5 emeritus
1998	Minneapolis, Minnesota	University of St Thomas	Facing the New Frontier: Why Do It Alone?	\$81,035.86	\$67,200.02	\$13,835.84	133 members, 22 spouses, 28 booths
1999	South Bend, Indiana	Notre Dame University	Effective Services Through Organizational Planning	\$71,941.91	\$76,633.89	(\$4,691.98)	158members, 18 spouses, 60 booths
2000	Ann Arbor, Michigan	University of Michigan	Leadership Renewal – Journey Into the New Century	\$85,276.43	\$103,414.60	(\$18,138.17)	185 members, 21 guests, 48 booths
2001	Madison, Wisconsin	University of Wisconsin	Partners in Learning	\$123,720	\$86,142	\$37,578	193 MAPPA members, 59 booths, 13 Guests,
2002	Ames, Iowa	Iowa State University	Planning for Excellence in Uncertain Times	\$108,000.00	\$74,000.00	\$34,000.00	152 attendees, 50 booths
2003	St Louis, Missouri	Southern Illinois Carbondale, Edwardsville	Your Gateway to the Best	no info		\$26,771.47	171 attendees, 41 booths
2004	Cleveland, Ohio	Case Western Reserve University	Rockin' the MAPPA World	\$163,650.00	\$175,964.00	(\$11,614.00)	240attendees, 70 booths, 26 spouses; Case covered loss
2005	St Paul, Minnesota	University of Minnesota, Minnesota State Colleges, Sebesta Blomberg and Assoc	Discovering MAPPA on the Mississippi	\$137,721.84 \$5,000.00	\$152,322.94	(\$11,343.94)	109 members, 7 Guests, 55 booths Sebesta Blomberg covered \$5,000
2006	Indianapolis, Indiana	Indiana University Purdue University Indianapolis	Race to Indy	no info			140 attendees (187 had registered), 55 booths
2007	Grand Rapids, Michigan	Ferris State University, Grand Valley State University, North Central Michigan College, Western Michigan University	Networking on the Grand	no info			
2008	Madison, Wisconsin	University of Wisconsin	Partners in Success	\$175,063	\$116,783	\$58,280	188 members, 58 booths
2009	Iowa City, Iowa	University of Iowa	Elevating our Leadership in Sustainability	\$172,738.69	\$193,848.36	(\$21,109.67)	325 participants, 133 MAPPA members; Iowa covered loss
2010	Moline, Illinois	Western Illinois University, Augustana College	Back to the Basics			\$70,000 (Approximate)	
2011	Cincinnati, Ohio	Cincinnati State Technical and Community College, University of Cincinnati	Expanding Your Reach Through Partnering			\$32,000 (Approximate)	
2012	Minneapolis, Minnesota	Minnesota Private Schools and Community Colleges	All Aboard to a Great Adventure			(\$17,000) (Approximate)	

2013	Grand Rapids, Michigan	Ferris State University, Grand Valley State University, North Central Michigan College, Western Michigan University		\$292,451.86	\$143,658.75	\$78,798.11	441 attendees
2014	West Lafayette, Indiana	Purdue University				\$62,892.57	215 attendees, 48 booths
2015	Milwaukee, Wisconsin	University of Wisconsin-Milwaukee, Marquette University		\$157,690.12	\$141,329.84	\$16,360.28	
2016	Des Moines, Iowa	Iowa State University					
2017	St Louis, Missouri	Co-locate with CAPPA					
2018	Cleveland, Ohio	Cleveland State University					
2019	Minneapolis, Minnesota	Minnesota State schools					
2020	COVID – No meeting						
2021	Virtual Summit hosted via Zoom platform	PCAPPA Co-host	Envisioning the Future			(\$ 1420) MAPPA portion shared loss	200 registrations, with option to review after end of conference
2022	Grand Rapids, Michigan	MiAPPA/MAPPA Conference, Ferris State University, Grand Valley State University	Bridging the Gap	\$241,205 Sponsorship Revenue \$207,569 Attendee Revenue		\$33,635.81 profit split with MiAPPA	260 Attendees 52 sponsors/booths with overall total of 360 attendees (including booth staff)

APPENDIX 2

MAPPA Officers And APPA Committee Representatives

Notes: Information extracted from MAPPA Board Meeting minutes and MAPPA newsletters; many of these records between 1955 and 1982 are missing.

Due to the Coronavirus Pandemic from 2020-2022, officer terms were extended by one year and several positions were left unfilled due to high employee turnover.

MAPPA President

Year	Name	School
1955	Paul Elleman*	Ohio State University
1955-56	Charles Havens	University of Illinois
1956-57	Paul Elleman*	Ohio State University
1957-58	R. J. Phillips	State University of Iowa
1958-59	Maurice Ekberg	Northwestern University (resigned; replaced by Phillips, Zellner and Roy Lund)
1959-60	Wilbur Zellner*	University of Chicago
1960-61	Ben Schaefer	Iowa State University
1961-62	Henry Pearson*	Indiana University – Bloomington
1962-63	Alva Ahearn	University of Wisconsin
1963-64	Ted Simon*	Michigan State University
1964-65	Gearhardt Carlson	Augustana College
1965-66	Robert Showalter	Ball State University
1966-67	Duane Nollsch	University of Iowa
1967-68	LeRoss Morris	Denison University
1968-69	Jack Manwell	Lawrence College
1969-70	John Archibald	Hamilton College
1970-71	William Edwards	Concordia Teachers College
1971-72	Mel Manion	State College of Iowa
1972-73	Ed Lyon	University of Notre Dame
1973-74	George Berry	University of Wisconsin/Milwaukee
1974-75	Dale Hawn	Grinnell College
1975-76	Eugene L. Miller	University of Chicago
1976-77	Robert Hughes	William Raney Harper College
1977-78	Robert Russell	Marquette University
1978-79	William Domke	Valparaiso University
1979-80	Norman Rick	University of Minnesota/Duluth
1980-81	William Whitman*	Iowa State University
1981-82	Frank Rice	University of Wisconsin/Madison
1982-83	Richard Neidhard	University of Cincinnati
1983-84	Gerry E. McCaig	Indiana State University NW
1984-85	Charles L. Codding	Bowling Green State University
1986-86	George Porter	University of Illinois
1986-87	William J. Sharp	Denison University
1987-88	Rocky Mediate	Youngstown State University

1988-89	John P. Harrod*	Northern Illinois University
1989-90	Gary Reynolds	Iowa State University
1990-91	Roger E. Rowe	Miami University
1991-92	Ronald T. Flinn*	Michigan State University
1992-93	Peter Sandberg	St. Olaf College
1993-94	Larry Quick	School of the Art Institute of Chicago
1994-95	James Landers	Xavier University
1995-96	Michael Gardner	Butler University
1996-97	James Christenson	University of Michigan
1997-98	Joseph Kish	Northeastern Illinois University
1998-99	Greg Fichter	Indiana University
1999-2000	Terry Ruprecht	University of Illinois
2000-01	Larry Quick	School of the Art Institute of Chicago
2001-02	Alan Bigger*	University of Notre Dame
2002-03	Clay Shetler	Goshen College
2003-04	Chris Ahoy*	Iowa State University
2004-05	Rebecca Hines	Ohio State University
2005-06	Jerry Carlson	Illinois State University
2006-07	Fred Plant	Valparaiso University
2007-08	Martha May	Purdue University
2008-09	John Ott	Ohio State University/OARDC
2009-10	Chuck Scott*	Illinois State University
2010-11	Ruthann Manlet*	University of Minnesota
2011-12	Brandon Baswell	Michigan State University
2012-13	Kristie Kowall	Illinois State University
2013-14	Lowell Bromander	Hamline University
2014-15	Michael Hamilton	Iowa State University
2015-16	Greg Adams	Marquette University
2016-17	Tim Thimmesch	Grand Valley State University
2017-18	Jim Bogan	University of Wisconsin/Madison
2018-19	Steven Gilsdorf	Western Michigan University
2019-20	George Hakim	University of Michigan/Flint
2020-21	George Hakim	University of Michigan/Flint
2021-22	Jack Mumma	Michigan State University
2022-23	Jeremiah Sewetel	John Carroll University
2023-24	Nicole Corll	Kent State University

*served as APPA President

MAPPA Members Serving as APPA Presidents (who did not serve as MAPPA Presidents)

1915	James Marks	University of Michigan
1916	A. W. McConnell	University of Wisconsin
1917	Thomas Sloss	Iowa State University
1918	A. W. McConnell	University of Wisconsin
1919	Arthur Duffy	Purdue University
1920	E. C. Pardon	University of Michigan
1921	L. R. Flook	University of Chicago
1922	L. R. Flook	University of Chicago
1923	Thomas Sloss	Iowa State University
1924	W. C. McCracken	Ohio State University
1925	C. D. Bushnell	Purdue University
1926	E. C. Pardon	University of Michigan
1927	H. A. Hildebrandt	University of Minnesota
1931	Thomas Sloss	Iowa State University
1933	C. D. Bushnell	Purdue University
1934	L. R. Flook	University of Chicago
1935	A. F. Gallistel	University of Wisconsin
1936	C. S. Havens	University of Illinois
1939	W. A. Davenport	Michigan State University
1941	W. B. Schoelwer	University of Cincinnati
1948	W. F. Holman	University of Minnesota
1952	E. C. Pardon	University of Michigan
1956	**A. F. Gallistel	University of Wisconsin
1973	George Moore	University of Cincinnati
1978	Walter Wade	Purdue University
1981	Thomas B. Smith	Ohio State University
2015	Peter Strazdas	Western Michigan University

**NOTE: Gallistel served as APPA Secretary/Treasurer for 35 years retiring from that position in May, 1958

MAPPA President-elect (known as Vice President until 1989)

Note: No information prior to 1979

1979-80	Bill Whitman	Iowa State University
1980-81	Frank Rice	University of Wisconsin/Madison
1981-82	Richard Neidhard	University of Cincinnati
1982-83	Gerry E. McCraig	Indiana State University NW
1983-84	Charles L. Coddling	Bowling Green State University
1984-85	George Porter	University of Illinois
1985-86	Bill Engle/Bill Sharp	Denison University
1986-87	Rocky Mediate	Youngstown State University
1987-88	John P. Harrod	Northern Illinois University
1988-89	Gary Reynolds	Iowa State University
1989-90	Roger E. Rowe	Miami University
1990-91	Ronald T. Flinn	Michigan State University
1991-92	Pete Sandberg	St. Olaf College
1992-93	Larry Quick	School of the Art Institute of Chicago
1993-94	Jim Landers	Xavier University
1994-95	Mike Gardner	Butler University
1995-96	Jim Christenson	University of Michigan
1996-97	Joe Kish	Northeastern Illinois University
1997-98	Greg Fichter	Indiana University
1998-99	Terry Ruprecht	University of Illinois
1999-2000	Phil Soule	Ohio State University
2000-01	Alan Bigger	University of Notre Dame
2001-02	Clay Shetler	Goshen College
2002-03	Chris Ahoy	Iowa State University
2003-04	Becky Hines	Ohio State University
2004-05	Jerry Carlson	Illinois State University
2005-06	Fred Plant	Valparaiso University
2006-07	Martha May	Purdue University
2007-08	John Ott	Ohio State University/OARDC
2008-09	Chuck Scott	Illinois State University
2009-10	Ruthann Manlet	University of Minnesota
2010-11	Brandon Baswell	Michigan State University
2011-12	Kristie Kowall	Illinois State University
2012-13	Lowell Bromander	Hamline University
2013-14	Michael Hamilton	Iowa State University
2014-15	Gregory Adams	University of Wisconsin/Milwaukee
2015-16	Tim Thimmesch	Grand Valley State University
2016-17	Joseph Han	Cleveland State University (left mid-term)
2017	James Bogan	University of Wisconsin-Madison
2017-18	Steven Gilsdorf	Western Michigan University
2018-19	George Hakim	University of Michigan/Flint
2019-20	Doug Ladtko	Albion College

MAPPA Past President (position eliminated in 2017)

No information prior to 1969		
1969-70	Jack Manwell	Lawrence College
1970-71	John Archibald	Hamilton College
1971-72	William Edwards	Concordia Teachers College
1972-73	Mel Manion	State College of Iowa
1973-74	Ed Lyon	University of Notre Dame
1974-75	George Berry	University of Wisconsin/Milwaukee
1975-76	Dale Hawn	Grinnell College
1976-77	Eugene L. Miller	University of Chicago
1977-78	Robert Hughes	William Raney Harper College
1978-79	Robert Russell	Marquette University
1979-80	William Domke	Valparaiso University
1980-81	Norman Rick	University of Minnesota/Duluth
1981-82	William Whitman	Iowa State University
1982-83	Frank Rice	University of Wisconsin/Madison
1983-84	Richard Neidhard	University of Cincinnati
1984-85	Gerry E. McCraig	Indiana State University NW
1985-86	Charles L. Coddling	Bowling Green State University
1986-87	George Porter	University of Illinois
1987-88	William J. Sharp	Denison University
1988-89	Rocky Mediate	Youngstown State University
1989-90	John P. Harrod	Northern Illinois University
1990-91	Gary Reynolds	Iowa State University
1991-92	Roger E. Rowe	Miami University
1992-93	Ronald T. Flinn	Michigan State University
1993-94	Peter Sandberg	St. Olaf College
1994-95	Larry Quick	School of the Art Institute of Chicago
1995-96	James Landers	Xavier University
1996-97	Michael Gardner	Butler University
1997-98	James Christenson	University of Michigan
1998-99	Joseph Kish	Northeastern Illinois
1999-2000	Greg Fichter	Indiana University
2000-01	Terry Ruprecht	University of Illinois
2001-02	Larry Quick	School of the Art Institute of Chicago
2002-03	Alan Bigger	University of Notre Dame
2003-04	Clay Shetler	Goshen College
2004-05	Chris Ahoy	Iowa State University
2005-06	Rebecca Hines	Ohio State University
2006-07	Jerry Carlson	Butler University
2007-08	Fred Plant	Valparaiso University
2008-09	Martha May	Purdue University
2009-10	John Ott	Ohio State University/OARDC
2010-11	Chuck Scott	Illinois State University
2011-12	Ruthann Manlet	University of Minnesota
2012-13	Brandon Baswell	Michigan State University
2013-14	Kristie Kowall	Illinois State University
2014-15	Lowell Bromander	Hamline University

2015-16	Mike Hamilton	Iowa State University
2016-17	Greg Adams	Marquette University

MAPPA Junior Representative to APPA

Notes: In 1989 the MAPPA Junior Representative position became a part of the presidential succession plan.

In 2020, position changed to Immediate Past President

No information prior to 1982

1982-83	Frank Rice	University of Wisconsin/Madison
1983-84	Frank Rice	University of Wisconsin/Madison
1984-85	Richard Neidhard	University of Cincinnati
1985-86	Gerry E. McCaig	Indiana University – Northwest
1986-87	Charles Coddling	Bowling Green State University
1987-88	George Porter	University of Illinois
1988-89	William Sharp	Denison University
1989-90	Rocky Mediate	Youngstown State University
1990-91	John Harrod	Northern Illinois University
1991-92	Gary Reynolds	Iowa State University
1992-93	Roger Rowe	Miami University
1993-94	Ronald T. Flinn	Michigan State University
1994-95	Peter Sandberg	St. Olaf College
1995-96	Larry Quick	School of the Art Institute of Chicago
1996-97	James Landers	Xavier University
1997-98	Michael Gardner	Butler University
1998-99	James Christenson	University of Michigan
1999-2000	Joseph Kish	Northeastern Illinois University
2000-01	Greg Fichter	University of Indiana
2001-02	Terry Ruprecht	University of Illinois
2002-03	Larry Quick	School of the Art Institute of Chicago
2003-04	Larry Quick	School of the Art Institute of Chicago
2004-05	Clay Shetler	Goshen College
2005-06	Greg Fichter	University of Indiana
2006-07	Becky Hines	Ohio State University
2007-08	Jerry Carlson	Butler University
2008-09	Fred Plant	Valparaiso University
2009-10	Martha May	Purdue University
2010-11	John Ott	Ohio State University/OARDC
2011-12	Charles Scott	Illinois State University
2012-13	Ruthann Manlet	University of Minnesota
2013-14	Brandon Baswell	Michigan State University
2014-15	Kristie Kowall	Illinois State University
2015-16	Lowell Bromander	Hamline University
2016-17	Michael Hamilton	Iowa State University
2017-18	Tim Thimmisch	Grand Valley State University
2018-19	James Bogan	University of Wisconsin/Madison

2019-20 Steven Gilsdorf Western Michigan University

MAPPA Immediate Past President

2021-22 George Hakim University of Michigan/Flint
2022-23 Jack Mumma Michigan State University

MAPPA Senior Representative to APPA

NOTE: In 1989 the MAPPA Senior Representative position became a part of the presidential succession plan.
Position eliminated in 2020.

1955	Charles Havens	University of Illinois
1957-58	Roy V. Lund	University of Minnesota
1958-82	No information	
1982-83	Norman Rick	University of Minnesota/Duluth
1983-84	Russ Reister	University of Michigan
1984-85	Russ Reister	University of Michigan
1985-86	Russ Reister	University of Michigan
1986-87	William Domke	Valparaiso University
1987-88	Charles Coddling	Bowling Green State University
1988-89	Charles Coddling	Bowling Green State University
1989-90	William Sharp	Denison University
1990-91	Rocky Mediate	Youngstown State University
1991-92	John P. Harrod	Northern Illinois University
1992-93	Gary Reynolds	Iowa State University
1993-94	Roger Rowe	Miami University (Ohio)
1994-95	Ronald T. Flinn	Michigan State University
1995-96	Peter Sandberg	St. Olaf College
1996-97	Larry Quick	School of the Art Institute of Chicago
1997-98	James Landers	Xavier University
1998-99	Michael Gardner	Butler University
1999-2000	James Christenson	University of Michigan
2000-01	Joseph Kish	Northeastern Illinois University
2001-02	Greg Fichter	Indiana University
2002-03	Terry Ruprecht	University of Illinois
2003-04	Terry Ruprecht	University of Illinois
2004-05	Terry Ruprecht	University of Illinois
2005-06	Clay Shetler	Goshen College
2006-07	Greg Fichter	University of Indiana
2007-08	Greg Fichter	University of Indiana
2008-09	Jerry Carlson	Butler University
2009-10	Fred Plant	Valparaiso University
2010-11	Chuck Scott	Illinois State University
2011-12	John Ott	Ohio State University/OARDC
2012-13	Chuck Scott	Illinois State University
2013-14	Ruthann Manlet	University of Minnesota
2014-15	Brandon Baswell	Michigan State University
2015-16	Kristie Kowall	Illinois State University
2016-17	Lowell Bromander	Hamline University
2017-18	Greg Adams	Marquette University
2018-19	Tim Thimmisch	Grand Valley State University
2019-20	James Bogan	University of Wisconsin/Madison

MAPPA Regional Director to APPA (created in 2020)

2020-21	Steven Gilsdorf	Wayne State University
2021-22	Sreven Gilsdorf	Wayne State University
2022-23	Steven Gilsdorf	Wayne State University

MAPPA Secretary

1954-55	W. R. Zellner	University of Chicago
1955-56	E. E. Kinney	Michigan State University
1956-57	Evan Walden	Grinnell College
1957-58	Evan Walden	Grinnell College
1959-82	No information	
1982-83	John Hoogakker	Rockford College
1983-84	John Hoogakker	Rockford College
1984-85	John Hoogakker	Rockford College
1985-86	Dale Haack	Gustavus Adolphus College
1986-87	Dale Haack	Gustavus Adolphus College
1987-88	Jack Dudley	University of Wisconsin/Parkside
1988-89	Jack Dudley	University of Wisconsin/Parkside
1989-90	Jack Dudley/John Houck	University of Wisconsin/Parkside/Ohio State
1990-91	Larry Quick	School of the Art Institute of Chicago
1991-92	Larry Quick	School of the Art Institute of Chicago
1992-93	Michael Gardner	Butler University
1993-94	Michael Gardner	Butler University
1995-96	Craig Hjelle	Bethel College and Seminary
1996-97	Terry Ruprecht	University of Illinois
1997-98	Terry Ruprecht	University of Illinois
1998-99	Phil Soule	Ohio State University
1999-2000	Ted Weidner	Eastern Illinois University
2000-01	Chris Ahoy	Iowa State University
2001-02	John Ott	Ohio State University/OARDC
2002-03	John Ott	Ohio State University/OARDC
2003-04	John Ott	Ohio State University/OARDC
2004-05	John Ott	Ohio State University/OARDC
2005-06	John Ott	Ohio State University/OARDC
2006-07	John Ott	Ohio State University/OARDC
2007-08	Ralph Zia	Northeastern Illinois University
2008-09	Ralph Zia	Northeastern Illinois University
2009-10	Kris Ackerbauer	University of Wisconsin
2010-11	Kris Ackerbauer	University of Wisconsin
2011-12	Kris Ackerbauer	University of Wisconsin
2012-13	Kris Ackerbauer	University of Wisconsin
2013-14	Robert Currie	Iowa State University
2014-15	Robert Currie	Iowa State University
2015-16	Robert Currie	Iowa State University

2016-17	Robert Currie	Iowa State University
2017-18	Nicole Corll	Kent State University
2018-19	Nicole Corll	Kent State University
2019-20	Nicole Corll	Kent State University
2020-21	Nicole Corll	Kent State University
2021-22	Nicoe Corll	Kent State University
2022-23		

MAPPA Treasurer

No information prior to 1982		
1982-83	Ken Rott	Ball State University
1983-84	Ken Rott	Ball State University
1984-85	Ken Rott	Ball State University
1985-86	Ken Rott	Ball State University
1986-87	John Harrod	Northern Illinois University
1987-88	Susan Kirkpatrick	Eastern Michigan University
1988-89	Susan Kirkpatrick	Eastern Michigan University
1989-90	Susan Kirkpatrick	Eastern Michigan University
1990-91	James Landers	Xavier University
1991-92	James Landers	Xavier University
1992-93	James Landers	Xavier University
1993-94	Joseph Kish	Northeastern Illinois University
1994-95	Joseph Kish	Northeastern Illinois University
1995-96	Joseph Kish	Northeastern Illinois University
1996-97	Clay Shetler	Goshen College
1997-98	Clay Shetler	Goshen College
1998-99	Clay Shetler	Goshen College
1999-2000	Clay Shetler	Goshen College
2000-01	Jerry Carlson	Illinois State University
2001-02	Jerry Carlson	Illinois State University
2002-03	Jerry Carlson	Illinois State University
2003-04	Jerry Carlson	Illinois State University
2004-05	Martha May	Purdue University
2005-06	Martha May	Purdue University
2006-07	Brandon Baswell	Michigan State University
2007-08	Brandon Baswell	Michigan State University
2008-09	Brandon Baswell	Michigan State University
2009-10	Brandon Baswell	Michigan State University
2010-11	Art Chonko	Denison University
2011-12	Art Chonko	Denison University
2012-13	Art Chonko	Denison University
2013-14	Art Chonko	Denison University
2014-15	Anthony McClellan	University of Illinois/Chicago(resigned mid-year)
2014-15	Art Chonko	Denison University
2015-16	Dana Gillon	University of Illinois/Urbana Champaign
2016-17	Dana Gillon	University of Illinois/Urbana/Champaign
2017-18	Dana Gillon	University of Illinois/Urbana/Champaign
2018-19	Art Chonko	Denison University
2019-20	Art Chonko	Denison University
2020-21	Art Chonko	Denison University
2021-22	James Klaiber	Oberlin College
2022-23	James Klaiber	Oberlin College

MAPPA Communications Chair (formerly Newsletter Editor)

1981-83	John Houck	Ohio State University
1983-87	Frank Rice	University of Wisconsin/Madison
1987-91	John Houck	Ohio State University
1991-93	Gary Kent	Indiana University
1993-95	Jim Christenson	University of Michigan
1995-2002	Rebecca Hamilton Hines	Ohio State University
2002-09	Ernest McVay	Ohio State University
2009-10	Gail Riese	Purdue University
2010-12	Amy Carnahan	Michigan State University
2012-14	James Bogan	University of Wisconsin
2014-15	Steven Gilsdorf	Western Michigan University
2015-16	Becky Guelig	University of Wisconsin/Madison
2016-17	Becky Guilig	University of Wisconsin/Madison
2017-18	Becky Banres	University of Wisconsin/Madison
2018-19	Brad Schenkel	University of Wisconsin/Madison
2019	Becky Barnes	University of Wisconsin/Madison
2019-20	Jeremy Johnston	Cleveland State University
2020-21	Jeremy Johnston	Cleveland State University
2021-22	Jeremy Johnston	Cleveland State University
2022-23	Jeremy Johnston	John Carroll University

MAPPA Historian

2011-23	Rebecca Hines	Retired – Ohio State University
---------	---------------	---------------------------------

MAPPA Business Partner (non-voting)

2011-14	John Coggins	Spirotherm
2014-15	Ed Choklek	FGM Architects
2015-19	Jamie Tran	Belfor USA
2019-20	Kris Perun	Cintas Corporation
2020-21	Kris Perun	Cintas Corporation
2021-22	Rudy Braydich III	ABM
2022-23	Rudy Braydich III	

MAPPA Conference Coordinator (non-voting)

2013-16	Kris Ackerbauer	University of Wisconsin/Madison
2016-18	Maggie Hamilton	Iowa State University
2018-20	Brandon Dugan	Cleveland State University
2020-21	Michelle Holstege	University of Wisconsin/Madison
2021-22	Michelle Holstege	University of Wisconsin/Madison
2022-23	Michelle Holstege	University of Wis

MAPPA Representative to APPA Awards and Recognition Committee

No information prior to 1982		
1982-83	?	
1983-84	?	
1984-85	F. Daniel Young	Muskingum
1985-86	?	
1986-87	?	
1987-88	Charles Coddling	Bowling Green State University
1988-89	?	
1989-90	William Whitman	Iowa State University
1990-91	William Whitman	Iowa State University
1991-92	William Whitman	Iowa State University
1992-93	William Whitman	Iowa State University
1993-94	William Whitman	Iowa State University
1994-95	Michael Stevenson	Columbus State Community College
1995-96	Michael Stevenson	Columbus State Community College
1996-97	?	
1997-98	Robert Getz	William Raney Harper College
1998-99	Robert Getz	William Raney Harper College
1999-2000	Alan Bigger	University of Notre Dame
2000-01	Alan Bigger	University of Notre Dame
2001-02	Alan Bigger	University of Notre Dame
2002-03	Rebecca Hines	Ohio State University
2003-04	Gary Shumaker	University of Notre Dame
2004-05	Gary Shumaker	University of Notre Dame
2005-06	Gary Shumaker	University of Notre Dame
2006-07	Gary Shumaker	University of Notre Dame
2007-08	Ernest McVay	Ohio State University
2008-09	Jerry Carlson	Butler University
2009-10	Jerry Carlson	Butler University
2010-11	Charles Darnell	Western Illinois University
2011-12	John Ott	Ohio State University/OARDC
2012-13	John Ott	Ohio State University/OARDC
2013-14	Ruthann Manlet	University of Minnesota
2014-15	Ruthann Manlet	University of Minnesota
2015-16	Doug Laditka	College of Wooster
2016-17	Doug Laditka	College of Wooster
2017-18	Doug Laditka	College of Wooster
2018-19	Doug Laditka	College of Wooster
2019-20	Becky Barnes	University of Wisconsin/Madison
2020-21	Becky Barnes	University of Wisconsin/Madison
2021-22	Brandon Dugan	Cleveland State University
2022-23	Brandon Dugan	Cleveland State University

**MAPPA Representative to APPA Member and Community Engagement Committee
(formerly Membership Committee)**

No information prior to 1982		
1982-83	?	
1983-84	Russ Reister	University of Michigan
1984-85	Russ Reister	University of Michigan
1985-86	?	
1986-87	Jon McLeod	?
1987-88	Jon McLeod	?
1988-89	Jon McLeod	?
1989-90	George Preston	School of the Art Institute of Chicago
1990-91	George Preston	School of the Art Institute of Chicago
1991-92	Joseph Kish	Northeastern Illinois University
1992-93	Joseph Kish	Northeastern Illinois University
1993-94	Joseph Kish	Northeastern Illinois University
1994-95	Craig Hjelle	Bethel College and Seminary
1995-96	Craig Hjelle	Bethel College and Seminary
1996-97	Craig Hjelle	Bethel College and Seminary
1997-98	Mike Kull	Purdue University/Calumet
1998-99	Mike Kull	Purdue University/Calumet
1999-2000	James Barnet	Western Illinois University
2000-01	James Barnet	Western Illinois University
2001-02	David Miller	Iowa State University
2002-03	David Miller	Iowa State University
2003-04	David Miller	Iowa State University
2004-05	David Miller	Iowa State University
2005-06	Brandon Baswell	Michigan State University
2006-07	Charles Scott	Illinois State University
2007-08	Charles Scott	Illinois State University
2008-09	Kristie Kowall	Illinois State University
2009-10	Kristie Kowall	Illinois State University
2010-11	Kristie Kowall	Illinois State University
2011-12	James Harrod	University of Wisconsin
2012-13	James Harrod	University of Wisconsin
2013-14	James Harrod	University of Wisconsin Hospital & Clinics
2014-15	Art Chonko	Denison University
2015-16	Erin Marsh	University of Iowa
2016-17	Erin Marsh	University of Iowa
2017-18	Erin Marsh	University of Iowa
2018-19	Kevin Austin	University of Chicago
2019-20	Kevin Austin	University of Chicago
2020-21	Kevin Austin	University of Chicago
2021-22	Jeff Miller	Sinclair College
2022-23	Jeff Miller	Sinclair College

MAPPA Representative to APPA Professional Affairs Committee (deleted in 2022)

No information prior to 1982		
1982-83	?	
1983-84	?	
1984-85	Donald Dedrick	University of Notre Dame
1985-86	?	
1986-87	Roger Rowe	Miami University (Ohio)
1987-88	Roger Rowe	Miami University (Ohio)
1988-89	Roger Rowe	Miami University (Ohio)
1989-90	Roger Rowe	Miami University (Ohio)
1990-91	Gary Kent	Indiana University
1991-92	Gary Kent	Indiana University
1992-93	Gary Kent	Indiana University
1993-94	Gary Kent	Indiana University
1994-95	Kirk Campbell	Carleton College
1995-96	Kirk Campbell	Carleton College
1996-97	Kirk Campbell	Carleton College
1997-98	John Harrod	University of Wisconsin/Madison
1998-99	Larry Quick	School of the Art Institute of Chicago
1999-2000	Larry Quick	School of the Art Institute of Chicago
2000-01	?	
2001-02	Robert Getz	William Rainey Harper College
2002-03	Greg Fichter	Indiana University
2003-04	Greg Fichter	Indiana University
2004-05	Greg Fichter	Indiana University
2005-06	Greg Fichter	Indiana University
2006-07	Greg Fichter	Indiana University
2007-08	Greg Fichter	Indiana University
2008-09	Greg Fichter	Indiana University
2009-10	Greg Fichter	Indiana University
2010-11	Jerry Carlson	Butler University
2011-12	Jerry Carlson	Butler University
2012-13	Jerry Carlson	Butler University
2013-14	James Harrod	University of Wisconsin/Madison
2014-15	James Harrod	University of Wisconsin/Madison
2015-16	James Harrod	University of Wisconsin/Madison
2016-17	James Harrod	University of Wisconsin/Madison
2017-18	James Harrod	University of Wisconsin/Madison
2018-19	Jack Mumma	Michigan State University
2019-20	Jack Mumma	Michigan State University
2020-21	Jack Mumma	Michigan State University

**MAPPA Representative to APPA Professional Development Committee
(name changed from Educational Programs in 2007)**

No information prior to 1982		
1982-83	?	
1983-84	?	
1984-85	John Hoogakker	Rockford College
1985-86	?	
1986-87	?	
1987-88	?	
1988-89	Bonita Hartman	Northeastern Illinois University
1989-90	Bonita Hartman	Northeastern Illinois University
1989-90	John Harrod	Northern Illinois University
1990-91	John Harrod	Northern Illinois University
1991-92	John Harrod	Northern Illinois University
1992-93	Gary Kent	Indiana University
1992-93	John Harrod	Northern Illinois University
1993-94	Emily Wren	IUPUI
1994-95	Emily Wren	IUPUI
1994-95	Gary Reynolds	Iowa State University
1995-96	Emily Wren	IUPUI
1996-97	James Demarest	Illinois State University
1997-98	James Demarest	Illinois State University
1998-99	James Demarest	Illinois State University
1999-2000	Chris Ahoy	Iowa State University
2000-01	Chris Ahoy	Iowa State University
2001-02	Chris Ahoy	Iowa State University
2002-03	Jeff Buenting	University of Illinois
2003-04	Ralph Zia	Northeastern Illinois University
2004-05	Ralph Zia	Northeastern Illinois University
2005-06	Ruthann Manlet	University of Minnesota
2006-07	Ruthann Manlet	University of Minnesota
2007-08	Ruthann Manlet	University of Minnesota
2008-09	Ruthann Manlet	University of Minnesota
2009-10	Doug Greenwood	University of Minnesota-Duluth
2010-11	Doug Greenwood	University of Minnesota-Duluth
2011-12	Doug Greenwood	University of Minnesota-Duluth
2012-13	Dana Gillon	University of Illinois/Urbana Champaign
2013-14	Dana Gillon	University of Illinois/Urbana Champaign
2014-15	Dana Gillon	University of Illinois/Urbana Champaign
2015-16	Sarah Ely	University of Michigan
2016-17	Sarah Ely	University of Michigan
2017-18	Ronald Pond	University of Wisconsin/Madison
2018*19	Ronald Pond	Kukwonago School District/Wisconsin
2019-20	Ronald Pond co-chair	Kukwonago School District/Wisconsin
2019-20	Brandon Dugan	Cleveland State University
2020-21	Ronald Pond co-chair	Kukwonago School District/Wisconsin
2020-21	Brandon Dugan	Cleveland State University
2021-22	Ronald Pond co-chair	Kukwonago School District/Wisconsin

2021-22
2022-23

Brandon Dugan
Dawn Aguilera

Cleveland State University
University of Wisconsin/Milwaukee

**MAPPA Representative to APPA Information and Research Committee
(deleted in 2022)**

1989-90	Gary Reynolds	Iowa State University
1990-91	Karen Patton	Ball State University
1991-92	Michael Gardner	Butler University
1992-93	Michael Gardner	Butler University
1993-94	Michael Gardner	Butler University
1994-95	Greg Fichter	Indiana University
1995-96	Greg Fichter	Indiana University
1996-97	Susan Kirkpatrick	Eastern Michigan University
1997-98	Susan Kirkpatrick	Eastern Michigan University
1998-99	Thomas Dale	University of St. Thomas
1999-2000	Thomas Dale	University of St. Thomas
2000-01	Thomas Dale	University of St. Thomas
2001-02	Thomas Dale	University of St. Thomas
2002-03	Thomas Dale	University of St. Thomas
2003-04	Thomas Dale	University of St. Thomas
2004-05	Fred Plant	Valparaiso University
2005-06	Fred Plant	Valparaiso University
2006-07	Jeri King	University of Iowa
2007-08	Jeri King	University of Iowa
2008-09	Jeri King	University of Iowa
2009-10	Jeri King	University of Iowa
2010-11	Jeri King	University of Iowa
2011-12	Michael Hamilton	Iowa State University
2012-13	Michael Hamilton	Iowa State University
2013-14	James Bogan	University of Wisconsin/Madison
2014-15	James Bogan	University of Wisconsin/Madison
2015-16	Steve Gilsdorf	Western Michigan University
2016-17	Steve Gilsdorf	Western Michigan University
2017-18	Bob Currie	Iowa State University
2018-19	Gerry McGillion	University of Chicago
2019-20	Myriam Weaver	University of Chicago
2020-21	Dawn Aguilera	University of Wisconsin/Milwaukee

MAPPA Representatives to APPA Committees now defunct

Small College

1983-84	Harold Fahl	?
1984-85	Harold Fahl	?
1987-88	William Sharp	Denison University
1988-89	William Plaskett, Jr.	Marietta College
1989-90	William Plaskett, Jr.	Marietta College
1990-91	Jim Morrow	Kenyon College
1991-92	Robert Lewis	Augustana College
1992-93	Robert Lewis	Augustana College
1993-94	Robert Lewis	Augustana College
1994-95	Robert Getz	William Rainey Harper College
1995-96	Robert Getz	William Rainey Harper College

Nominating Committee

1983-84	Frank Rice	University of Wisconsin/Madison
1984-85	Rocky Mediate	Youngstown State University
1985-87	No information	
1987-88	George Porter	University of Illinois
1988-89	William Sharp	Denison University
1989-90	William Sharp	Denison University
1990-91	Rocky Mediate	Youngstown State University
1991-92	Rocky Mediate	Youngstown State University

Special Projects

1984-85	William Sharp	Denison
---------	---------------	---------

Medical College

1984-85	William Sharp	Denison University
1989-90	Ted Hajes	Northeastern Ohio University College of Medicine
1990-91	Ted Hajes	Northeastern Ohio University College of Medicine
1991-92	James Hopp	Medical College of Wisconsin
1992-93	James Hopp	Medical College of Wisconsin

International

1989-90	Fred Garcia	University of Illinois/Chicago
1990-91	Fred Garcia	University of Illinois/Chicago
1991-92	James Christenson	University of Iowa

Government Relations

1994-95	Ken Burns	?
1995-96	Gary Kent	Indiana University

APPENDIX 3

MAPPA Treasury History of Cash Balances

(information extracted from MAPPA Board Meeting minutes and MAPPA newsletters; many of these records between 1955 and 1982 have not been located)

Date	Total		
		07/22/04	\$115,114.43
12/06/82	\$9,950.75	10/29/04	\$110,133.11
09/23/83	\$14,035.11	11/10/04	\$110,171.00
12/09/83	\$14,319.44	07/18/05	\$105,554.06
09/28/84	\$18,021.91	10/07/05	\$103,232.61
12/04/84	\$17,597.37	11/14/05	\$102,290.74
09/19/85	\$21,217.47	06/15/06	\$81,104.59
12/02/85	\$19,757.21	01/01/07	\$64,151.89
07/13/86	\$19,674.20	12/31/07	\$104,162.53
09/26/86	\$19,238.86	07/09/08	\$102,798.80
08/31/87	\$16,975.26	12/31/08	\$139,591.43
11/30/87	\$16,049.88	07/08/09	\$146,456.03
06/30/88	\$9,312.18	12/31/09	\$172,598.43
08/31/88	\$13,392.25	10/05/10	\$154,358.13
09/30/89	\$17,328.87	12/31/10	\$200,815.16
07/31/90	\$15,457.15	07/17/11	\$205,000.00
12/10/90	\$8,355.21	12/31/11	\$192,417.80
07/06/91	\$9,205.80	07/31/12	\$228,561.50
09/30/91	\$18,900.92	12/31/12	\$156,524.83
12/01/91	\$8,374.33	10/25/13	\$191,814.10
03/31/92	\$13,675.07	12/31/13	\$260,784.84
09/30/92	\$24,228.68	11/17/14	\$343,549.83
12/03/92	\$26,697.53	12/31/14	\$326,611.91
03/06/93	\$46,370.43	12/31/15	\$360,000.00
07/26/93	\$46,123.28	12/31/16	\$375,034.59
09/30/93	\$56,122.09	12/31/17	\$215,346.06
12/01/93	\$57,094.51	12/31/18	\$193,879.08
05/31/94	\$63,262.76	12/31/19	\$198,740.43
02/06/94	\$64,845.46	12/31/20	\$206,489.44
12/01/95	\$64,845.46	12/31/21	\$201,936.16
07/17/96	\$53,329.28	12/31/22	\$315,569.22
11/20/02	\$92,602.03		
07/18/03	\$110,907.80		
11/12/03	\$104,321.48		

Awards and Recognition
MAPPA Recipients of APPA Awards

Award	Date	Recipient	Institution
APPA Fellow	2017	Jeri King	University of Iowa
APPA Fellow	2012	Bill Elvey	University of Wisconsin/Madison
APPA Fellow	2009	Alan Bigger	Earlham College
APPA Fellow	2006	Chris Ahoy	Iowa State University
APPA Fellow	2006	Don Guckert	University of Iowa
Award for Excellence	2016		Ohio State University
Award for Excellence	2014		University of Michigan
Award for Excellence	2006		University of Michigan
Award for Excellence	2003		Iowa State University
Award for Excellence	2001		University of Cincinnati
Award for Excellence	1996		Miami University
Award for Excellence	1996		University of Toledo
Award for Excellence	1995		University of Michigan/Housing
Award for Excellence	1993		University of Michigan/Housing
Award for Excellence	1989		Ohio State University
Award for Excellence	1988		Michigan State University
Effective & Innovative Practices	2020		Purdue
Effective & Innovative Practices	2018		Ohio State University
Effective & Innovative Practices	2018		University of Iowa
Effective & Innovative Practices	2017		Grand Valley State University
Effective & Innovative Practices	2016		Michigan State University
Effective & Innovative Practices	2015		Western Michigan University
Effective & Innovative Practices	2012		University of Iowa
Effective & Innovative Practices	2012		Western Michigan University
Effective & Innovative Practices	2012		Purdue University
Effective & Innovative Practices	2011		Purdue University
Effective & Innovative Practices	2010		Purdue University
Effective & Innovative Practices	2010		University of Iowa
Effective & Innovative Practices	2009		Western Michigan University
Effective & Innovative Practices	2009		Valparaiso University
Effective & Innovative Practices	2007		Grand Valley State University
Effective & Innovative Practices	2007		University of Iowa
Effective & Innovative Practices	2005		University of Iowa
Effective & Innovative Practices	2004		Illinois State University
		Pete Strazdas, Michelle Frederick, Daniel Wooten	
Meritorious Service	2020		
Meritorious Service	2019	Ruthann Manlet	University of Minnesota

Meritorious Service	2018	Chuck Scott	Illinois State University
Meritorious Service	2015	Jeri King	University of Iowa
Meritorious Service	2014	Don Guckert	University of Iowa
Meritorious Service	2013	John Harrod	University of Wisconsin/Madison
Meritorious Service	2011	Fred Plant	Valparaiso University
Meritorious Service	2007	Terry Ruprecht	University of Illinois
Meritorious Service	2004	Chris Ahoy	Iowa State University
Meritorious Service	2003	Alan Bigger	Notre Dame
Meritorious Service	2001	Greg Fichter	Indiana University
Meritorious Service	2001	Larry Quick	School of the Art Institute of Chicago
Meritorious Service	2000	Robert Getz	William Rainey Harper College
Meritorious Service	1999	James Christenson	University of Michigan
Meritorious Service	1998	Ron Flinn	Michigan State University
Meritorious Service	1996	Gary Reynolds	Iowa State University
Meritorious Service	1984	Richard Neidhart	University of Cincinnati
Meritorious Service	1983	William Whitman	Iowa State University
Meritorious Service	1982	Thomas B. Smith	Ohio State University
Meritorious Service	1979	William Domke	Valparaiso University
Meritorious Service	1962	Henry Pearson	Indiana University
Meritorious Service	1959	Charles Havens	University of Illinois
*Meritorious Service	1958	Al Gallistel	University of Wisconsin
*Meritorious Service	1958	Paul Elleman	Ohio State University
Pacesetter	2017	Mike Hamilton	Iowa State University
Pacesetter	2016	Dana Gillon	University of Illinois/Urbana Champaign
Pacesetter	2015	James Harrod	University of Wisconsin
Pacesetter	2014	Jerry Carlson	Butler University
Pacesetter	2013	Chuck Scott	Illinois State University
Pacesetter	2012	Brandon Baswell	Michigan State University
Pacesetter	2011	John Ott	Ohio State University/OARDC
Pacesetter	2010	Kristie Kowall	Illinois State University
Pacesetter	2009	Ruthann Manlet	University of Minnesota
Pacesetter	2008	Jeri King	University of Iowa
Pacesetter	2007	Clay Shetler	Goshen College
Pacesetter	2005	Fred Plant	Valparaiso University
Pacesetter	2003	J.A. Bardouille	University of Illinois
Pacesetter	2002	Chris Ahoy	Iowa State University
Pacesetter	2001	Jeff Buenting	University of Illinois
Pacesetter	2000	David Cain	Illinois State University
Pacesetter	2000	Don Hufford	Purdue University
Pacesetter	1999	Becky (Hamilton) Hines	Ohio State University
Pacesetter	1999	Joe Kish	Northeastern Illinois University
President's Award	2018	Chuck Scott	Illinois State University
President's Award	2013	Amy Carnahan	Michigan State University
President's Award	2013	James Harrod	University of Wisconsin
President's Award	2013	Kristie Kowall	Illinois State University

President's Award	2012	Alan Bigger	Earlham College
President's Award	2011	Alan Bigger	Earlham College
President's Award	2008	Chris Ahoy	Iowa State University
President's Award	2006	Terry Ruprecht	University of Illinois
President's Award	2002	David Cain	Illinois State University
President's Award	2001	Jack Dempsey	University of Illinois
President's Award	1998	Emily Wren	IUPUII
President's Award	1997	John Harrod	University of Wisconsin
President's Award	1994	Gary Reynolds	Iowa State University
President's Award	1992	Robert Getz	William Rainey Harper College
President's Award	1986	William Domke	Valparaiso University
Rex Dillow Award	2019	Steven Gilsdorf	Western Michigan University
Rex Dillow Award	2013	Don Guckert, Jeri King	University of Iowa
Rex Dillow Award	2006	Roger Rowe	Miami University
Rex Dillow Award	2004	Rich Robben	University of Michigan
Rex Dillow Award	2003	Don Guckert	University of Iowa
Rex Dillow Award	2003	Jeri King	University of Iowa
Rex Dillow Award	1992	James Christenson	University of Michigan
Sustainability Award	2018		University of Michigan
Sustainability Award	2017		Ohio State University
Sustainability Award	2016		Ohio University
Sustainability Award	2016		University of Michigan
Sustainability Award	2013		Oberlin College
Unsung Hero	2018	Brandon Dugan	Cleveland State University
Unsung Hero	2017	Erin Marsh	University of Iowa
Unsung Hero	2016	Maggie Hamilton	Iowa State University
Unsung Hero	2015	Lowell Bromander	Hamline University
Unsung Hero	2014	Jim Bogan	University of Wisconsin/Madison
Unsung Hero	2013	Jim Hubbard	Heartland Community College
Unsung Hero	2012	Phyllis Gillis	Illinois State University
Unsung Hero	2011	Christine Douglas	University of Iowa
Unsung Hero	2010	David Miller	Iowa State University
Unsung Hero	2009	Kris Ackerbauer	University of Wisconsin

*Inaugural year of first NAPPA (now APPA) Award

MAPPA Records Retention Guidelines

Many MAPPA records have specific retention requirements to comply with tax laws and other governmental regulations. Retention requirements are subject to change and should be reviewed annually. The schedule listed below may be used as a guide:

The following documents and records should be retained permanently:

- By Laws and Administrative Guidelines
 - Current and future editions posted on MAPPA website
 - Hard copies of 1982, 1991, 1997, 1998, and 2012 editions housed in Ohio State University (OSU) Archives
 - 1982-2012 copies digitized and stored in Dropbox
 - Past President responsible for posting current edition on MAPPA website
- Articles of Incorporation
 - Posted on MAPPA website in MAPPA History document
 - Original document in OSU Archives
 - Digitized copy posted in Dropbox
- Tax Exemption information and correspondence
 - Posted on MAPPA website in MAPPA History document
 - Hard copies pre-2014 in OSU Archives
 - Current and future information maintained by Treasurer
- MAPPA Board Meeting minutes
 - 1982-2014 Minutes digitized and stored in Dropbox
 - Current and future meeting minutes posted in Dropbox by Secretary
- General Ledger
 - 1982-2014 digitized records stored in Dropbox
 - Current and future records posted in Dropbox by Treasurer
- Financial Audits
 - Pre-2014 Audits digitized records stored in Dropbox
 - Current and future audits posted in Dropbox by Treasurer
- Tax returns
 - 1993-2014 Tax Returns (missing 1996, 1997, 1998) digitized and stored in Dropbox
 - Current and future returns posted in Dropbox by Treasurer
- End of year financial statements
 - 1982-2014 statements digitized and stored in Dropbox
 - Current and future statements posted in Dropbox by Treasurer

The following documents and records should be retained as specified with the Treasurer and destroyed by the Treasurer upon the expiration of each document:

- Bank statements – 7 years
- Cancelled checks – 7 years
- Expense and distribution schedules – 7 years
- Insurance policies – life of policy plus 3 years

- Membership and dues records – 7 years

Other documents that are not required but are of significance historical value that should be retained permanently:

- Annual Meeting Reports prepared by host
 - Pre-2014 reports digitized and posted in Dropbox
- Records of activities unique to MAPPAs digitized and stored in Dropbox; original copies stored in OSU Archives
 - MAPPAs/Big Ten Trainers Collaboration Agreement 1998
 - Big 10 and Friends Trainers History
 - Custodial Cost and Staffing Research 1991-1994

NOTES:

1. The MAPPAs History document is posted on the MAPPAs Website and accessible to the membership. Each year following the annual MAPPAs Conference, this document will be updated by the Historian to include new officers and award recipients, events, policy/procedure changes of historical significance, etc.
2. MAPPAs information stored in The Ohio State University Archives are labeled as “MAPPAs (Midwest Association of Higher Education Facilities Officers)”, donated in August, 2017. OSU Archives may be contacted at 614-292-2409 or archives@osu.edu. (See attached copy of the Deed of Gift and list of hard and electronic copies housed in the OSU Archives.)

4/20/2014

Updated 6/30/14

Updated 9/7/17

Updated 9/1/23

DEED OF GIFT
OF THE MAPPA – MIDWEST ASSOCIATION OF HIGHER EDUCATION FACILITIES OFFICERS)
TO THE OHIO STATE UNIVERSITY
FOR THE BENEFIT OF THE OHIO STATE UNIVERSITY LIBRARIES

1. Transfer of Ownership

MAPPA – Midwest Association of Higher Education Facilities Officers hereby irrevocably donates, transfers and conveys to The Ohio State University (the “University”), for the benefit of The Ohio State University Libraries (the “Library”), all rights, title, and interest that MAPPA possesses in the materials described on Exhibit A to this Deed of Gift (the “Donated Materials”), except as noted in this Deed of Gift. The Donated Materials will be henceforth known as the MAPPA – Midwest Association of Higher Education Facilities Officers Collection.

By signing this Deed, MAPPA members understand and agree that the location, retention, cataloging, preservation, and disposition of the Donated Materials by the Library will be conducted in its discretion, in accordance with University and Library policy and with applicable law. Common discretionary uses (except uses of any third party material contained therein and which is not in the public domain and except for those rights specified to other individuals) by the Library include, but are not limited to, physical or digital educational uses including, but not limited to, exhibition, display, reformatting for preservation and access purposes, and making works available for research and scholarship. In addition, the Library may: (i) permit any users of the Library’s services to access, search, download, print, and otherwise use the Donated Materials; and (ii) provide copies of the Donated Materials to other libraries and nonprofit institutions, including digital archiving repositories, and permit such entities to similarly use the Donated Materials. MAPPA members acknowledge that the Library may dispose of any Donated Materials not selected for permanent retention in accordance with its Deaccessioning Policy. Retained Donated Materials shall be made accessible for research, subject to the terms and conditions, if any, stated below:

2. Copyright

A. Current copyright ownership

To the best of MAPPA members’ knowledge, (please select *only one* of the following statements):

- MAPPA owns all copyrights in the Donated Materials (i.e., all works were created by MAPPA, or MAPPA acquired the copyrights in all Donated Materials.)
- MAPPA owns **some** of the copyrights in the Donated Materials (i.e., some of the Donated Materials were created by MAPPA, or MAPPA acquired the copyrights in some of the Donated Materials, but the Donated Materials also contain works for which other individuals or organizations control the copyrights.)
- MAPPA does not own **any** of the copyright(s) in the Donated Materials. (If selected, please skip section 2B)

MAPPA agrees to include all relevant known copyright information in the description of the Donated Materials provided on Exhibit A.

B. Transfer of copyright ownership:

Please select *only one* of the following options.

- MAPPA irrevocably assigns to the University, for the benefit of the Library, any and all copyrights the organization owns in the Donated Materials.
- MAPPA retains full ownership of any and all copyrights in the Donated Materials, but MAPPA grants the University a nonexclusive right to authorize all uses of these materials for non-commercial research, scholarly, or other educational purposes pursuant to a Creative Commons Attribution, Non-commercial license.

{00204948-1}

MAPPA retains full ownership of any and all copyrights in the Donated Materials and does not transfer, nor intend to transfer, any ownership or rights to the University.

Regardless of MAPPA's above choice as to transfer of copyright ownership, MAPPA acknowledges that some of the discretionary uses incidental to the Donated Materials' inclusion in the collections of the University (including, but not limited to, exhibition, display, and research access) may implicate copyrights. To the extent that such activities are not already permitted under statutory copyright exceptions such as fair use, MAPPA grants the University an irrevocable non-exclusive royalty-free worldwide perpetual license for all reasonable discretionary uses.

3. Subsequent Donations from Donor:

In the event that MAPPA may hereafter donate additional materials to the University for the benefit of the Library, such gifts shall be set forth in an Addendum to this Deed of Gift and will be governed by the terms and conditions stated above. The Addendum shall include a description of the additional materials so donated and any conditions necessary and pertinent to those specific, newly-donated materials.

4. Publicity

News of this gift may be shared with University publications and websites, as well as other media as appropriate, unless declined in writing by Donor(s). All news items shall be published at the editors' discretion. The University is required by law to release the names of all donors and the date, amount, and terms of their gifts if a public records request is received asking for such information. Therefore, declining gift publicity will not ensure that a gift remains confidential.

SIGNATURE OF DONOR:

MAPPA represents and warrants that the organization is the sole owner(s) of the Donated Materials described above; that MAPPA has full right, power, and authority to give the Donated Materials to the University; and that the information MAPPA has provided is accurate. The terms of this Deed of Gift shall apply to all of the Donated Materials described on Exhibit A and on any subsequently delivered Addendum notwithstanding that some materials may be delivered before or after the date of this Deed of Gift.

Signed: (MAPPA representative)

this 24 day of August, 2017.

ACCEPTANCE BY THE UNIVERSITY:

The University hereby accepts this gift with appreciation and agrees to the conditions stated in this Deed of Gift.

Date:

9/7/17

Name and Title: Lisa R. Carter, Associate Director, Special Collections and Area Studies
The Ohio State University Libraries

EXHIBIT A TO DEED OF GIFT

Description of Donated Materials

Affiliation agreement, articles of incorporation, by-laws and administrative guidelines, constitution, custodial cost and staffing report, histories, photos and videotape

Courtesy of the Association of Research Libraries and adapted from a form developed at the University of Minnesota Libraries.

{00204948-1}

MAPPA (Midwest Association of Physical Plant Administrators)
Inventory

1. Videotape: "MAPPA Wants You" membership video: 1999
2. MAPPA: The history of our association (so far): 2012
3. Affiliation Agreement, Articles of Incorporation: 1993, 1982
4. By-laws and Administrative Guidelines: 1982-2012
5. Big 10 and Friends Trainers History: 2013
6. Constitution: 1955
7. Custodial Cost & Staffing Report: 1991-1994
8. MAPPA 2001 Annual Conference Photos (on CD-Rom): 10/28/2001

Electronic copies of all documents can be found at J:\departments\ARV\University Archives\Electronic accessions\2017\142-2017 (MAPPA)

Electronic copies of digital photographs can be found at J:\departments\ARV\Digital Photo Collection\04departments\MAPPA